



Zac Posen

PROMINENT COLORS
Navy/Black combinations,
Ivory/Navy combinations, Pinks,
Grays and shades of Violet

INSPIRATION
La Belle et la Bête

SIGNATURE COLOR
Navy

COLOR PHILOSOPHY
Combinations of moody hues
with vibrant street color



www.pantone.com

PANTONE® fashion color report fall 2008

Blue Iris PANTONE® 18-3943

Royal Lilac PANTONE 18-3531

Shady Glade PANTONE 18-5624

Caribbean Sea PANTONE 18-4525

Aurora Red PANTONE 18-1550

Shitake PANTONE 18-1015

Withered Rose PANTONE 18-1435

Twilight Blue PANTONE 19-3938

Burnt Orange PANTONE 16-1448

Ochre PANTONE 14-1036

A Season of Change

NEW YORK FASHION WEEK, FEBRUARY 1-8, 2008

Best described as a season of change, fall '08 is defined by rich, elegant hues that offer a vibrant selection. New York's fashion designers emphasize cooler blues, greens and purples in the top five tones used in their collections, followed by variations of warm red, orange and yellow.

"Fall is traditionally a time for subdued, quiet colors, but this season we are seeing a shift toward cool hues with bright, exciting undertones," said Leatrice Eiseman, executive director of the Pantone Color Institute®. "Conventional tones such as warm autumn hues, chocolate browns and steel grays are also among the fall color choices. Blue and purple tones have become staples, as illustrated by Blue Iris, one of the top 10 colors chosen by designers this season, and Pantone's Color of the Year for 2008."

Blue Iris, a beautifully balanced blue with an undertone of purple, is a favorite among designers, as it combines the calming aspects of blue with the mystical and spiritual qualities of purple. Dramatic **Royal Lilac** brings purple to the forefront of fashion, and generates a bit of heat with its exciting red undertones.

Serene, sophisticated **Caribbean Blue** is another popular hue this fall, especially in jewelry and accessories. But it can add a colorful intensity wherever it is used in the wardrobe.

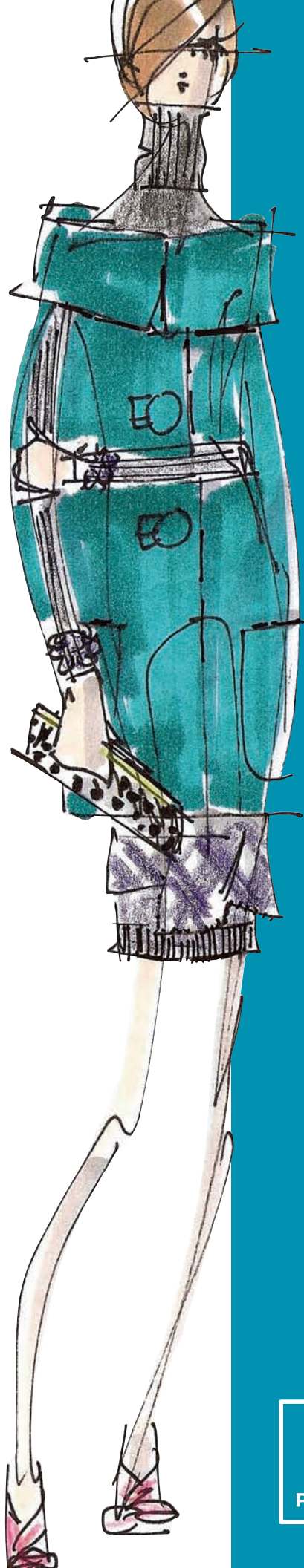
Twilight Blue, a twist on a classic navy, shows the transitional aspect of spring segueing into fall. Serving as a wonderful base color, **Shady Glade** delivers a natural elegance to the fall palette. Taking green in an interesting direction with its true green characteristics, this hue is a departure from greens of seasons past, which have had distinctively yellow undertones.

Reds are a steadfast favorite for fall and **Aurora Red** is no exception. Versatile and universally appealing, this true red adds a splash of energy to the palette. Soft, dusky **Withered Rose**, with its pinkish qualities and brown undertones, is a versatile hue that blends with every shade.

Ochre, a beautifully mellow yellow with a hint of mustard, adds a touch of lightness and spice. Orange has had a long run, and now, more than ever, consumers are gravitating toward intense shades like **Burnt Orange**, bringing this once steady background color to the foreground. The complex yet modest **Shitake** is an intriguingly understated shade, especially when teamed with the robust colors of fall '08.



www.pantone.com



Peter Som

PROMINENT COLORS

Nuanced brights such as Raspberry Red, Apple Green and Deep Turquoise mixed with neutral tones such as Plum, Maroon Red and various shades of Navy

INSPIRATION

The offbeat quirkiness of Diane Arbus photographs and the sharp, artistic direction and visuals from the television show *Mad Men*

SIGNATURE COLOR

Apple Green

COLOR PHILOSOPHY

Have fun





Douglas Hannant

PROMINENT COLORS
Imperial Purple, Chartreuse,
Black, Silver and White

INSPIRATION
Balanchine

SIGNATURE COLOR
Imperial Purple

COLOR PHILOSOPHY
Austere luxury





Y&Kei

PROMINENT COLORS

Warmer, earthier colors including Burgundy Wine, Rusty Orange, Mineral Red, Yellow Ochre, Vintage Champagne and Cool Porcelain

INSPIRATION

The idea of “strange beauty” — something that is freakishly odd, but at the same time elegantly beautiful. This oxymoron, specifically created for this season, gave us more freedom and achieves an avant-garde take on traditional fashion. We are also constantly inspired by our home country of Korea, as well as European and American cultures — the resulting designs are a unique combination of melded ideas.

SIGNATURE COLOR

Mineral Red, Rusty Orange and Yellow Ochre juxtaposed with Porcelain, Black, Beige and Brown to achieve a distinctive richness and “strange beauty”

COLOR PHILOSOPHY

Rich and warm colors communicated in a subtle and indirect manner





Elie Tahari

PROMINENT COLORS

Color combinations including warm jewel tones, muted Corals and Reds with Teal and Gold accents; regal Purples and Blues contrasted with deep Greens

INSPIRATION

Saturated hues inspired by gem stones and Gold ornamentation

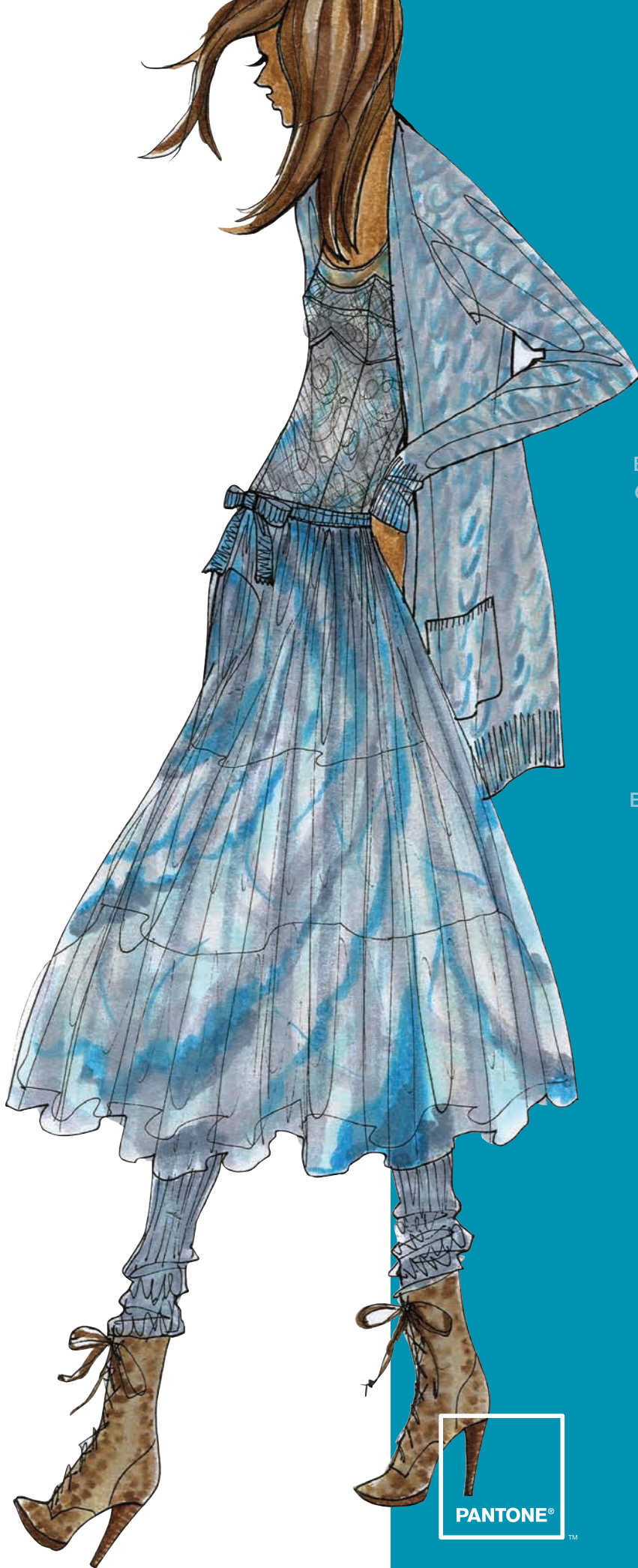
SIGNATURE COLOR

Shitake

COLOR PHILOSOPHY

Vibrant colors that add depth and vigor to any look





Tracy Reese

PROMINENT COLORS
Baby Blue, Raven Black, Rustic
Copper, Deep Berry, Bright Teal
and Emerald Green

INSPIRATION
Forces of nature combined
with the beauty of art

SIGNATURE COLOR
Stormy Blue

COLOR PHILOSOPHY
Embrace the elements of nature
and wear rich and bold
explosions of color for fall.





Carmen Marc Valvo

PROMINENT COLORS
Black, Chocolate and Camel juxtaposed with deep, rich jewel tones like Peacock, Lipstick Red and Star Sapphire

INSPIRATION
Gloria Wondrous' (Elizabeth Taylor) sensuality in *Butterfield 8*

SIGNATURE COLOR
Peacock

COLOR PHILOSOPHY
Neutrals accented by sexy, warm jewel tones like Lipstick Red and Star Sapphire





Temperley London

PROMINENT COLORS

Highly saturated and rich, jewel-like colors: Lime Greens, rich metallic Beetle Greens, Raspberry, Aubergine

INSPIRATION

Looking at Greta Garbo films and working with the rich and unashamedly over-the-top, jewel-like costumes she wore at the time

SIGNATURE COLOR

Beetle Green — Emerald shot with Gold

COLOR PHILOSOPHY

Rich, deep and confident





Lela Rose

PROMINENT COLORS
Mallard Green, Chili Powder Red,
Bright Eggplant, Dark Mustard
and Powdered Dahlia woven
around Salt and Pepper wool

INSPIRATION
The spice markets and
pharmacies of Morocco where
there were rich colors in
powdered form

SIGNATURE COLOR
Mallard Green

COLOR PHILOSOPHY
Jewel tones, texture and
layers all mixed into one





Reem Acra

PROMINENT COLORS
Warm Green, Mustard Yellow
and Deep Red

INSPIRATION
All my travels and being
surrounded by people that have
warmth and sophistication

SIGNATURE COLOR
Always have Red or Gold

COLOR PHILOSOPHY
Stay warm





Waleed Khairzada for Cynthia Steffe

PROMINENT COLORS
Fire Engine Red, Lapis Blue and Bordeaux
anchored by Black and Bone

INSPIRATION
Sarah Moon and Nick Knight photographs

SIGNATURE COLOR
Red

COLOR PHILOSOPHY
Modern, sophisticated brights



PANTONE® fashion color report fall 2008

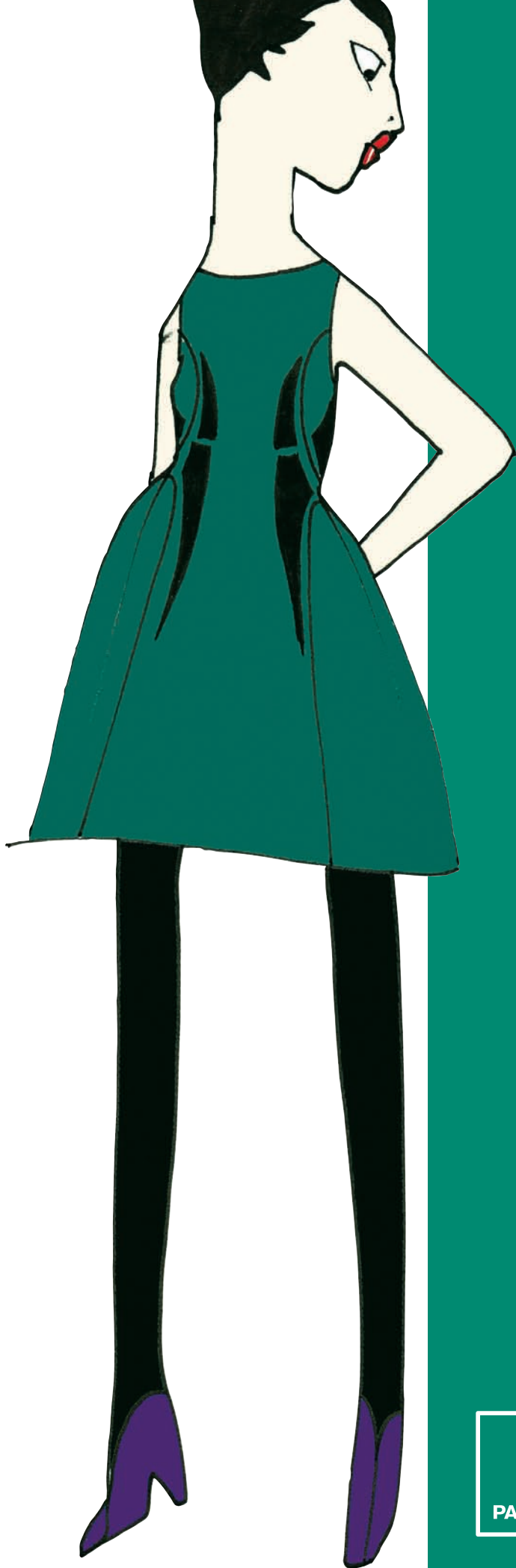


Photo: Martha Camarillo

Doori Chung for Doo.ri

PROMINENT COLORS
Lush color combinations
of Kelp, Moss, Mint,
Eggplant and Marine

INSPIRATION
Mapping, topography
and botany

SIGNATURE COLOR
Forest Green

COLOR PHILOSOPHY
Layering rich colors and
organic prints



PANTONE® fashion **color report** fall 2008



Alvin Valley

PROMINENT COLORS

Earth tones and industrial neutrals with accents in Picante, Inca Gold, Ice Flow and Burnt Orange

INSPIRATION

The dichotomy between futurism and archaism, Bauhaus, Louise Brooks, German cinema of the 1920s and 1930s, primitivism and perpetual motion

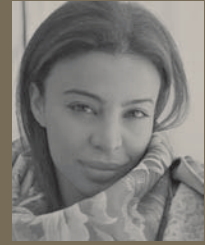
SIGNATURE COLOR

Ash, Steel Gray and Caviar

COLOR PHILOSOPHY

Modern twists to neutrality and the emphasis of subtle nuances





Tia Cibani for Ports 1961

PROMINENT COLORS

Limerick (Mossy Green), Sycamore (Warm Tan), Dulse (Malt Brown) and Coll (Ochre) are accented with pops of Loch (Indigo) and Rowan (Red-Orange) to stimulate the subconscious mind.

INSPIRATION

The beauty of the natural landscape mixed with the fantasy of Gaelic mythology — I felt it was important to explore the more bold colors of Loch (Indigo), Ross (Forest Green) and Rowan (Warm Bright Red) as a tribute to the childish wonder we all possess

SIGNATURE COLOR

Loch (Indigo)

COLOR PHILOSOPHY

Practicality blended with the excitement of fantasy





Wicky Hassan for Miss Sixty

PROMINENT COLORS

Rich, vintage-inspired colors like Deep Purple are paired with lighter hues to create subtle tone-on-tone looks that are elegant. Pops of bright Coral Orange add a graphic, rock 'n' roll element that reference the 1960s and 1970s.

INSPIRATION

The haute hippie, bohemian style of Woodstock icon Janis Joplin combined with the gritty glamour of rock 'n' roll as depicted in *Performance*, the 1968 cult film starring Mick Jagger — the vibrant patchwork of colors and textures that defines Joplin's look is re-imagined to create a collection that is both vintage and modern, all with a cool, psychedelic attitude

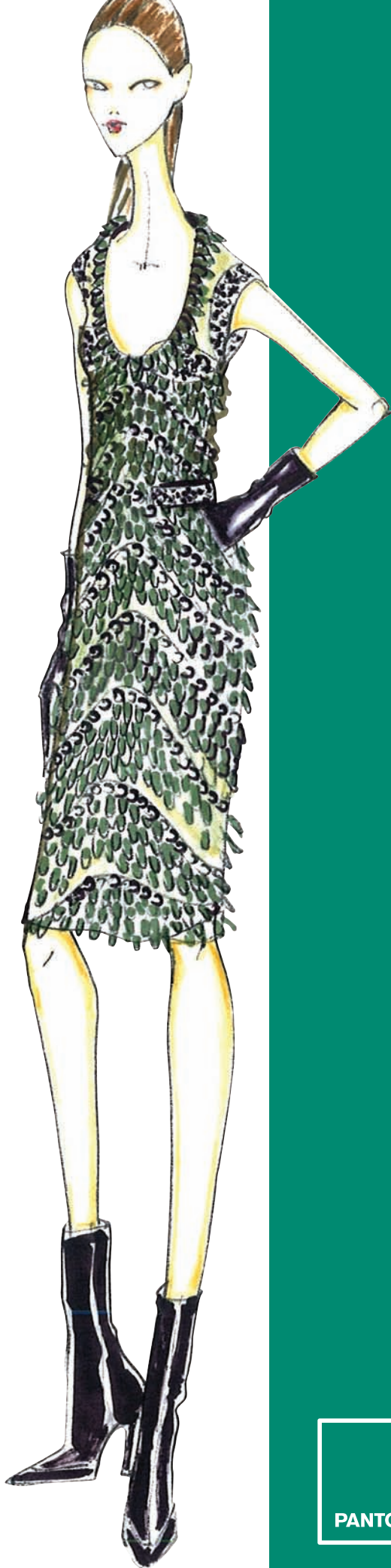
SIGNATURE COLOR

Purple with a touch of Orange — vintage and modern, hippie but haute, tough yet feminine

COLOR PHILOSOPHY

The decadence of 1970s' rock 'n' roll with a modern, glamorous twist





Luca Luca

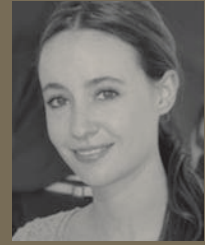
PROMINENT COLORS
Dark Plum, Forest Green,
Rust, Ivory and Black

INSPIRATION
Ernesto Caivano's dark, romantic
love story *Into the Woods*

SIGNATURE COLOR
Dark Plum

COLOR PHILOSOPHY
Color is muted down with
dark overlays





Jenni Kayne

PROMINENT COLORS

A patchwork of contrasting colors that is both graphic and organic — Spectrum Blue cut with Black and sprinkled with Mandarin Red and Mustard

INSPIRATION

A vintage patchwork painting of a modern day quilt — the play of colors seemed familiar, but new at the same time

SIGNATURE COLOR

Charcoal Gray

COLOR PHILOSOPHY

Dark colors that are offset with rich pop colors





Dennis Basso

PROMINENT COLORS

Warm, ombré and tone-on-tone colors from Creamy Beige to deep Charcoal tones

INSPIRATION

A feeling of warmth and luxury in the cold weather seasons

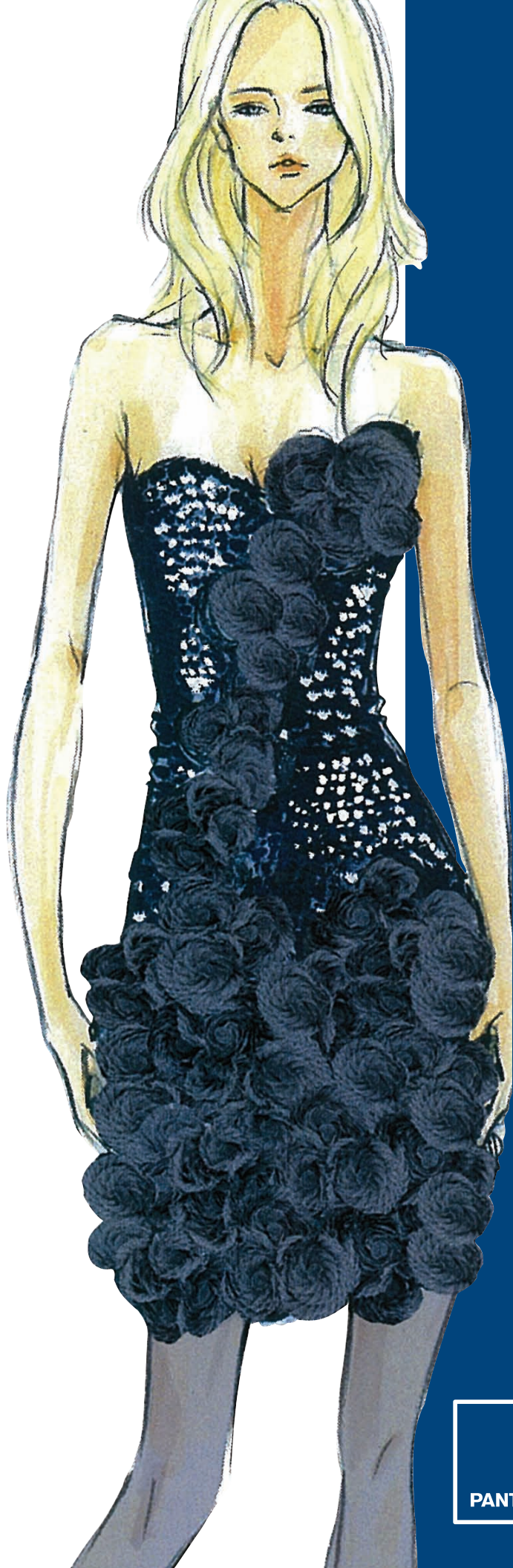
SIGNATURE COLOR

Tones of Cocoa Brown through to Deep Charcoal

COLOR PHILOSOPHY

Use color as the backdrop to show off the design elements of the garment.





Yigal Azrouël

PROMINENT COLORS
Azrouëlian Gray and Deep Navy
against Organic Greens and
Mustard Yellow; Storm, Smoke,
Moss, Eucalyptus and Dandelion

INSPIRATION
The palette is dark and
moody, somber but rich and
earthy. Our men's collection
often has influence over
the women's palette.

SIGNATURE COLOR
Dandelion

COLOR PHILOSOPHY
Mixing textures to bring about
a color's different tonalities





David Rodriguez

PROMINENT COLORS

Red rules! A beautiful, rich Red has been my favorite color since childhood.

INSPIRATION

My grandpa's Red plaid barn coat was the perfect shade of Red. I have been chasing that ideal Red my whole career... It is the emperor of all Reds.

SIGNATURE COLOR

Emperor Red

COLOR PHILOSOPHY

Colors that evoke emotions. Red means so many things — life, love, passion, as well as the exact opposites. It is a purely emotional color.





Akiko Ogawa

PROMINENT COLORS

The combination of Deep Indigo, Iridescent Shining Teal and Jet

INSPIRATION

The glittering arc of the Milky Way Galaxy — I was captivated by the icy beauty of its countless stars, sparkling like a belt of Silver sand in the infinite reaches of space.

The disparate elements underpinning the collection include Maetel, the mysterious heroine of the popular sci-fi anime series *Galaxy Express 999*.

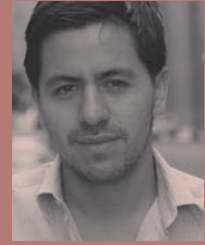
SIGNATURE COLOR

Iridescent Shining Teal

COLOR PHILOSOPHY

The Galaxy





Brian Reyes

PROMINENT COLORS

Mineral tones as well as a strong presence of Marlstone Gray, Serpentine Green, Tempera Blue, Burnt Sienna and Lava Orange — these colors are integrated among more neutral earth tones such as Excalibur, Antler, Lilac Marble, Duffel Bag and Inca Gold

INSPIRATION

The overlap between climate and culture, weather and technology — geographical topography from various parts of the world is incorporated into the collection with our ripe fabric selection and embellishment details

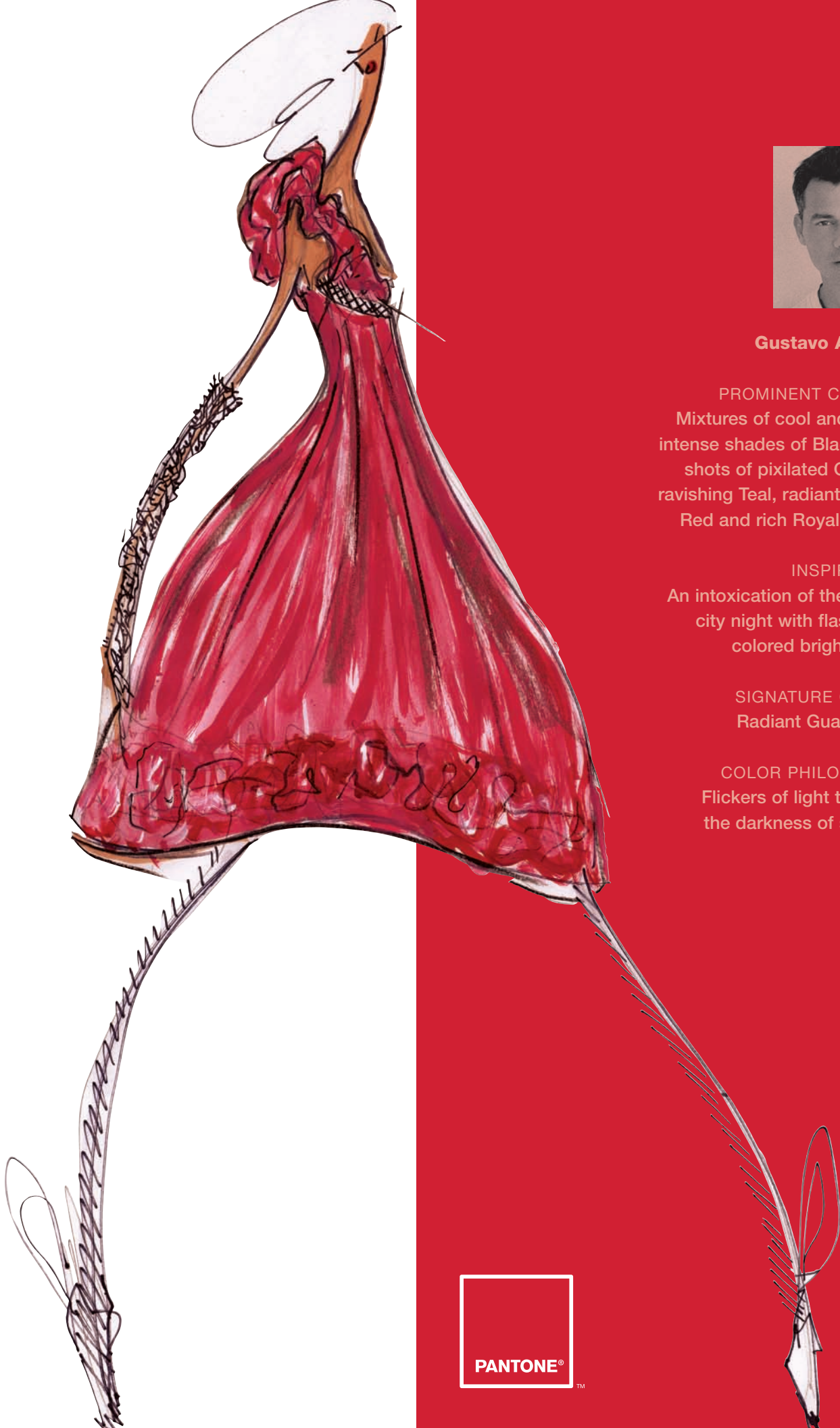
SIGNATURE COLOR

Withered Rose is a very strong element that stands out on its own. It plays a dual role as a strong mineral hue and also has a touch of natural terrain.

COLOR PHILOSOPHY

Our color philosophy is full of life and Technicolor, defined by hyper-realistic, saturated levels of color.





Gustavo Arango

PROMINENT COLORS
Mixtures of cool and warm
intense shades of Black with
shots of pixilated Copper,
ravishing Teal, radiant Guava
Red and rich Royal Purple

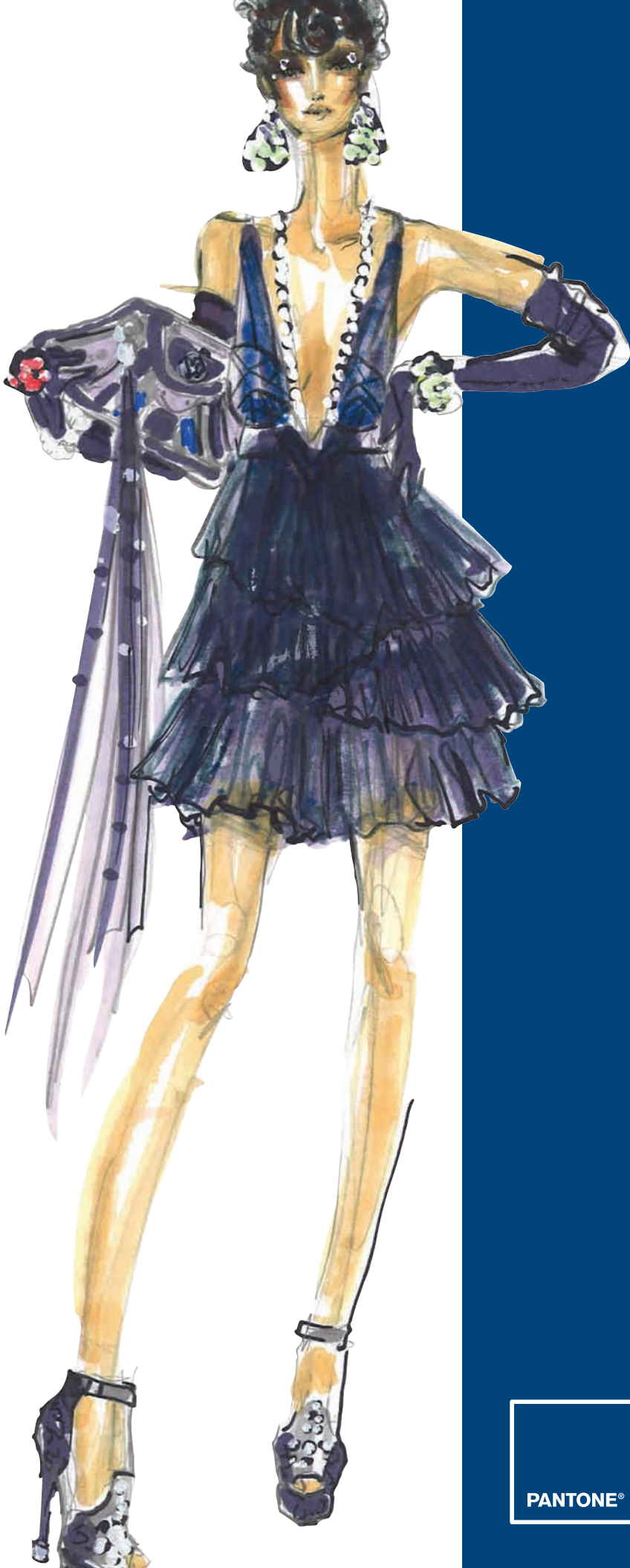
INSPIRATION
An intoxication of the urban
city night with flashes of
colored bright lights

SIGNATURE COLOR
Radiant Guava Red

COLOR PHILOSOPHY
Flickers of light through
the darkness of shades



PANTONE[®] fashion **color report** fall 2008



**Kimora Lee Simmons
for Baby Phat**

PROMINENT COLORS

Smokey jewel tones, shades of vineyards, Chocolate and a touch of Bright Orange to add a fruity twist to fall

INSPIRATION

Stained glass and art deco finishes

SIGNATURE COLOR

Vineyard and Charcoal





Tadashi Shoji

PROMINENT COLORS

Scarlet Red, Mahogany, Charcoal Gray and Emerald Green

INSPIRATION

The rich, opulent jewel tones in Asia — I studied fine art in Tokyo under Japan's leading contemporary artist, Jiro Takamatsu, who is credited for paving the way for the modern art movement in Japan during the 1960s. During that time, I was immersed in rich jewel tones and saw how these regal colors could be incorporated in design.

SIGNATURE COLOR

Asian-inspired Red — it is rich and warm with a nod to the season and its colorful foliage

COLOR PHILOSOPHY

The colors are derived from an opulent perspective. They're colors that I use in my own home to decorate a room. These jewel tones do not overwhelm my designs and the garment is the star.





Laura Poretzky for Abaeté

PROMINENT COLORS

Crimson, Blush, Dark Orchid,
Electric Violet, Peacock Tail,
Midnight Blue, Cadet Blue, Armor
Gray and Smokey Slate

INSPIRATION

Medieval times, James Whistler's
Peacock Room of the 1870s
and the dark rich jewel tones
of fall fruits

SIGNATURE COLOR

Peacock Tail

COLOR PHILOSOPHY

A soft palette of Smokey
Slate and Armor Gray with
accents of jewel tones





Erin Fetherston

PROMINENT COLORS

Deep, warm tones of Green, Red and Purple. Forest and Ivy Greens are highlighted by shades of Golden Chartreuse. Purples are Dusty Royal and Mauve. Reds have a renaissance tone ranging from Burgundy to Poppy. These richer colors are then balanced by the presence of a neutral palette of Antique Pinks, Beige and Black.

INSPIRATION

Images of nature — the colors one would find in a Bavarian forest as it creeps from autumn to dormant winter

SIGNATURE COLOR

Rose Red

COLOR PHILOSOPHY

Have striking, bold color work in a wintery palette with a balance of muted tones, rich and deep hues of royal colors, highlighted with pop accents.





Charlotte Ronson

PROMINENT COLORS

Cool colors such as Plum, Eggplant, Midnight Blue, Gray and Black, with accents of Electric Blue, Fluorescent Yellow and Magenta. The only warm hint is the Magenta binding and pocket lining.

INSPIRATION

France and 1960s' Jane Birkin — what she exuded was effortless. She was young but fearless, natural, romantic, dressed-down glamour.

SIGNATURE COLOR

Plum and Midnight

COLOR PHILOSOPHY

Blues, Purples and Blacks with hints of neutrals, Camels and Charcoal as the base, and then the subtle blasts of brights to add some personality to the palette





Photo: Ngoc Minh Ngo

Betsey Johnson

PROMINENT COLORS

Black with sparks of primary theatrical colors, such as Scarlet Red, Kelly Green, Chrome Yellow and Cobalt Blue, with additions of strange color mixes such as Scarlet and Salmon, Turquoise and Cobalt, Purple and Puce, Ochre and Shocking Pink — all lit with oily, strange metallics like greasy Blue-Black and Mud Blacks to add a slimy slickness

INSPIRATION

Two favorite movies: the Black, bright-colored, light beatnik scene in *Funny Face* and the surreal dance productions in *American in Paris*

SIGNATURE COLOR

The color of gourmet Scottish sliced Salmon

COLOR PHILOSOPHY

Keep your sunny side up. Darks and Blues will perk up hints of primary brights and odd color combos.



designer **must haves**

A compact, tight-fitting coat in Indigo Navy — **Akiko Ogawa**

A tailored jumpsuit in Caviar and Bracken — **Alvin Valley**

Anything fringe — long or short, leather, rayon, felt or yarn — **Betsey Johnson**

Delicate layering pieces juxtaposed with opulent luster and detailing in mineral tones — **Brian Reyes**

Cocktail dresses embellished with feathers and jewels — **Carmen Marc Valvo**

My wool blend, Midnight Gray and Black striped turtleneck mini dress, belted with a Black knit belt with a patent leather buckle — it should be worn with Black wooly tights or leggings and Smoke suede boots with a metal toe plate — **Charlotte Ronson**

My cashmere barn coat in Emperor Red plaid — **David Rodriguez**

A Black or Brown jacquard item that will give you a color spectrum in the way the fabric weave has been interpreted — **Dennis Basso**

Double-breasted cotton blanket coat in Forest Green jacquard — **Doori Chung for Doo.ri**

A spiral seam dress in Imperial Purple — **Douglas Hannant**

Below-the-knee tweed pencil skirt in Shitake — **Elie Tahari**

The rose bud dress in Rose Red — **Erin Fetherston**

A short cocktail dress with a mixture of rich, intense Black textured textiles that create a unique collage of art — **Gustavo Arango**

A Royal Midnight fur felt riding hat with feather trim — **James Coviello**

An Oatmeal/Taupe belted jacket with Silver Fox collar trim — **Jenni Kayne**

Clustered jewelry with touches of bright stones in Candy Pinks, Charcoal and Vineyard — **Kimora Lee Simmons for Baby Phat**

A beautifully draped, Madame Grès-inspired cocktail dress in Crimson and Blush — **Laura Poretzky for Abaeté**

My Dark Mustard washed taffeta parka — it is classic, sporty, casual and luxury all in one — **Lela Rose**

Beaded cocktail dress in Black leather and Forest Green iridescent feathers — **Luca Luca**

The perfect little Black dress — **Nanette Lepore**

Gold-flecked glen plaid coat with dramatic accordion pleat sweep, worn with skinny pants — **Pamella Roland**

An Apple Green, pressed-wool cocoon cape — **Peter Som**

Coats in Green or Blue — **Reem Acra**

Anything cashmere such as my classic turtleneck sweater in Chocolate Brown — **Tadashi Shoji**

Billowing dresses in bright-jeweled colors — volume and unashamed glamour — **Temperley London**

Our tweed coat — it has a structured, tubular body with strong shoulders, comfy texture and a large sweep. It is a mixture of Dulce (Malt Brown), braided Pebbles and Blackhorn, speckled with Sloe (White). — **Tia Cibani for Ports 1961**

A long reefer coat in Loganberry plaid — **Tracy Reese**

Our new shaped jacket with a flute skirt in Red — **Waleed Khairzada for Cynthia Steffe**

A macro-volume top in a luxe Purple hue, paired with 1970s-inspired boot-cut denim trousers — the combination creates a deliberate contrast that recalls the easy, unconventional glamour of Woodstock-era icon Janis Joplin, the high priestess of rock — **Wichy Hassan for Miss Sixty**

The cocoon-shaped, brushed wool cape coat in Mineral Red — **Y&Kei**

The patent leather paillettes cocktail dress in Smoke and Storm — **Yigal Azrouël**

Wool/poodle tux overcoat — **Zac Posen**



www.pantone.com

designers choose paint **for home**

Rug because it goes well with Bengé furniture. — **Akiko Ogawa**

Atmosphere — it's clean, crisp and modern. Use it anywhere requiring tranquility. — **Alvin Valley**

Rich Salmon for modern contemporary or antiques — it will work in any room. — **Betsey Johnson**

Rust — it stimulates energy, generates enthusiasm, feels comforting and strong, and has a warm simplicity with its tone. This color would be ideal in any home office or workspace. — **Brian Reyes**

A rich hue of Gray would be beautiful and very masculine, particularly with a crisply painted Cream molding. Van Gogh allegedly painted the walls of his studio Gray — the richness of the dark hue was serene. — **Carlos Campos**

I always like the way a room looks when the walls are one color and all the framing is a contrast stark White. I love everything White with touches of color elsewhere so I would start slowly painting my bathroom Seafoam and my kitchen walls a bright Lemon. — **Charlotte Ronson**

A faded Gray Lilac — ideal for spaces that are serene and relaxing, such as a bathroom or lounge. It adds a touch of organic futurism that is both neutral and modern. — **Christian Cota**

Emperor Red! Anywhere... If it was good enough for Diana Vreeland, then it's good enough for me. — **David Rodriguez**

Subtle Beige with traces of Peach — this works as a great background for staging furniture and is extremely flattering to one's skin tone. — **Dennis Basso**

Having been inspired by looking at wall coverings from Wook Kim, I am compelled by the idea of Black interiors. A Black bathroom could be very dramatic and beautiful. — **Doori Chung for Doo.ri**

Imperial Purple — it would work well with a Black and White photography collection. — **Douglas Hannant**

Metallic shades — Silvers, Golds, Bronzes and pearlized colors. — **Erin Fetherston**

Antique Loden in a study, home office or library — books pictures and objects look best against a dark dramatic setting. — **James Coviello**

Black Lacquer in a library or a cozy den — it provides an air of glamour to a casual room. — **Jenni Kayne**

Apple Green — it can brighten up any room yet still be very sophisticated. — **Kimora Lee Simmons for Baby Phat**

Peacock Tail for a library, inspired by Whistler's Peacock room. — **Laura Poretzky for Abaeté**

Shades of Green in all interior spaces due to the awareness of the environment. — **Luca Luca**

Champagne Pink for the bedroom. — **Nanette Lepore**

Lemon Ice in pretty much any room, especially the kitchen, because it reminds me of the lemon trees in southern Italy. — **Nicole Romano**

Paprika and other spice tones — it gives any space a sexy, exotic edge, especially in an accent wall. — **Pamella Roland**

Pale, pale Blue Gray — chic, elegant and relaxing. This paint color would be best in a bedroom because it is very soothing. — **Peter Som**

I always like a hint of Warm Red on at least one wall. — **Reem Acra**

Dark Chocolate for doors, frames and skirting boards combined with Light Gray walls. — **Staerk**

A rich velvety Red in a cozy space like a TV room, home office or library. — **Tadashi Shoji**

Slate Gray — it allows you to have a neutral palette that is different than the usual Off-White/White option and allows you to transform your space by changing a few accent pieces with different pops of color. I just recently painted my showroom Gray and I find it so helpful when constantly changing seasons and inspirations. — **Tia Cibani for Ports 1961**

Glossy Black with White trim will make a room with low ceilings cozy and inviting. — **Tracy Reese**

Mare Lavender — a feminine and versatile color which gives modern interiors a softer touch. — **Wenlan Chia for Twinkle by Wenlan**

Classic White because it allows art and furnishings to pop. — **Wichy Hassan for Miss Sixty**

PANTONE 164-2-2 C — we love this color because of its texture and depth. It is a dignified and graceful hue that can be used in any room, stirring various emotions. — **Y&Kei**

Navy — it's regal and romantic, a great color for a dining room to entertain guests. — **Zac Posen**



www.pantone.com

Blue Iris PANTONE® 18-3943
CMYK 75 58 2 0
GOE 59-1-4

Royal Lilac PANTONE 18-3531
CMYK 66 77 0 0
GOE 46-1-7

Shady Glade PANTONE 18-5624
CMYK 98 19 68 7
GOE 105-3-6

Caribbean Sea PANTONE 18-4525
CMYK 100 17 26 3
GOE 93-1-5

Aurora Red PANTONE 18-1550
CMYK 13 100 88 2
GOE 21-2-5

Shitake PANTONE 18-1015
CMYK 52 50 67 17
GOE 155-1-4

Withered Rose PANTONE 18-1435
CMYK 30 57 50 2
GOE 16-4-3

Twilight Blue PANTONE 19-3938
CMYK 100 72 12 24
GOE 62-1-7

Burnt Orange PANTONE 16-1448
CMYK 13 63 100 0
GOE 13-2-7

Ochre PANTONE 14-1036
CMYK 11 24 74 0
GOE 142-1-1

PANTONE FASHION + HOME SMART Color System

Pantone is the only globally available, off-the-shelf color system that fashion designers and their vendors can trust for unsurpassed color accuracy. Technical advancements in today's marketplace inspired Pantone to redesign the PANTONE FASHION + HOME Color System, making the System SMART to meet speed-to-market needs, lower color management costs and provide higher color quality at point of sale—requirements necessary in today's global market. Using the new PANTONE FASHION + HOME Color System, designers can reduce color development cycles by 50 percent or more.

The PANTONE Goe System™

The PANTONE Goe System is a completely new color inspiration and specification system for the graphic arts industry including 2,058 new PANTONE Colors, plus modern tools and interactive software for multimedia color reproduction. Created to answer the color needs of graphic designers—from concept to execution—the new PANTONE Goe System offers total creative flexibility. It provides a comprehensive range of colors that are easy to locate and specify in analog and digital formats. And, using printed or digital palette cards, experimenting, finalizing and sharing color palettes in numerous ways is easy.

PANTONE Fashion Color Report, Volume 29, February 2008

Pantone, Inc., 590 Commerce Blvd., Carlstadt, NJ 07072-3098

Tel: 201.935.5500. PANTONE Colors displayed here may not match PANTONE-identified standards. Consult current PANTONE FASHION + HOME Color System publications for accurate color. PANTONE® and other Pantone, Inc. trademarks are the property of Pantone, Inc.

Pantone, Inc. is a wholly-owned subsidiary of X-Rite, Incorporated.

All other trademarks are the property of their respective owners.

© Pantone, Inc., 2008. All rights reserved.

Design by John De Francesco



www.pantone.com