

# FASHION COLOR REPORT FALL 06

PANTONE<sup>®</sup>

ALVIN VALLEY



## STEADFAST AND STUNNING

NEW YORK FASHION WEEK FALL 2006, FEBRUARY 3-10, 2006

JUST AS DAY TURNS TO TWILIGHT, FALL 2006 COLORS ARE A SUBTLE DEEPENING OF THE WORLD AROUND, LIT WITH THE FINAL GLOW OF THE TURNING HORIZON. NEW YORK DESIGNERS HAVE FOUND THEMSELVES IN A SANCTUARY OF COLOR, FILLED WITH THE CONSTANCY OF NIGHTFALL.

NEUTRALS TAKE CENTER STAGE AS A SOOTHING REMINDER OF LIFE'S MANY REASSURANCES: FROM **FROST GRAY**, EVOCATIVE OF A QUIET WINTER MORNING, TO **APPLE CINNAMON**, THE ESSENCE OF FRESHLY BREWED TEA. THE NEUTRALS, WHILE SIMPLE, PROVIDE A LANDSCAPE FOR COMPLEXITY. THE TOUCHES OF RICH TONES IN THE PALETTE ADD AN EXOTIC DIMENSION TO THE NEUTRALS — ESPECIALLY RELEVANT AS ACCESSORIES CONTINUE TO PREVAIL. THE COMBINATION OF **PALE KHAKI** AND **RED MAHOGANY** TELLS THE STORY OF A CLASSIC BOOK, BOUND WITH A VELVET RIBBON. **VETIVER** PAIRED WITH **PURPLE MAGIC** IS A PLUSH COUCH DECORATED WITH A SILK PILLOW.

WARMTH AND VIBRANCY HAVE FOUND A WAY TO HARMONIZE. THIS SEASON'S ORANGE, **GOLDEN OCHRE**, GOES TO THE WARM SIDE WITH AN UMBER UNDERTONE AND A TOUCH OF ELEGANCE. **MINERAL RED** ADDS AN INVITING SENSE OF INTRIGUE WHEN USED AGAINST A BACKGROUND OF **SIMPLY TAUPE**, A BASIC YET COMFORTING NEUTRAL.

STRONG THROUGH SEVERAL CONSECUTIVE SEASONS, NOTEWORTHY **BIJOU BLUE** GIVES A SENSE OF CONSTANCY, A COLOR WE CAN RELY ON. LEANING ON TEAL, IT IS A RARE SHADE THAT UNIVERSALLY COMPLEMENTS ALL SKIN TONES — A BEAUTIFUL COLOR FOR FLATTERING DESIGNS.

"FALL 2006 IS A TIME TO TRANSITION BACK TO MORE DEPENDABLE COLORS," SAYS LEATRICE EISEMAN, EXECUTIVE DIRECTOR, PANTONE COLOR INSTITUTE®. WE'RE LOOKING FOR COLORS WE CAN WRAP OURSELVES IN — A FEELING ACHIEVED THROUGH CLASSIC NEUTRALS AS A BASE, ACCENTED WITH RICH HUES. HALF OF THE PALETTE, REMARKABLY, IS EXPRESSED IN BASIC CHESTNUTS — ALL VERY FAMILIAR, VERY APPROACHABLE TONES. IT'S AN INVITING WARMTH NOT SEEN IN THE PAST FEW SEASONS THAT DESIGNERS ARE NOW EMBRACING."

FOR 12 YEARS, PANTONE, INC. HAS SURVEYED THE DESIGNERS OF NEW YORK FASHION WEEK TO BRING YOU THE SEASON'S MOST IMPORTANT COLOR TRENDS. THIS SKETCHBOOK PREVIEWS COLOR FOR FALL 2006. IT IS ALSO AVAILABLE ONLINE AT [WWW.PANTONE.COM/FALL2006](http://WWW.PANTONE.COM/FALL2006).



**SIMPLY TAUPE**

PANTONE 16-0906  
C.0 M.9 Y.25 K.27



**PALE KHAKI**

PANTONE 15-1216  
C.15 M.15 Y.46 K.3



**APPLE CINNAMON**

PANTONE 17-1045  
C.0 M.29 Y.79 K.18



**GOLDEN OCHRE**

PANTONE 16-1346  
C.0 M.52 Y.100 K.7



**MINERAL RED**

PANTONE 17-1537  
C.0 M.90 Y.83 K.12



**FROST GRAY**

PANTONE 17-0000  
C.2 M.2 Y.5 K.50



**VETIVER**

PANTONE 17-0613  
C.0 M.1 Y.30 K.50



**BIJOU BLUE**

PANTONE 18-3921  
C.88 M.71 Y.25 K.3



**PURPLE MAGIC**

PANTONE 19-3540  
C.57 M.100 Y.0 K.10



**RED MAHOGANY**

PANTONE 19-1521  
C.0 M.100 Y.90 K.55

PANTONE

# FCR 06

fashion color report  
fall two thousand six



**MICHAEL VOLLBRACHT FOR BILL BLASS**

**prominent colors** lilac and chartreuse; teal and black

**inspiration** vintage pastoral print from bucol **signature color**

teal and/or chartreuse **color philosophy** pretty, feminine soft  
colors juxtaposed with earthy hues



BILL BLASS



**PURPLE MAGIC**

PANTONE 19-3540  
C.57 M.100 Y.0 K.10

PANTONE  
**FCR**  
**06** fashion color report  
fall two thousand six



**GILLES MENDEL FOR J. MENDEL**

**prominent colors** powdery pales like chalk, pumice and dusty rose contrasted with black currant, the final accent is pewter metallic threads in the tweeds and gold lamé.

**inspiration** a sophisticated palette is part of the signature of the house. **signature color** either chalk which we used for several gowns or wild berry, a new sensuous color for a knockout dress **color philosophy** powdery pales contrasted with deep stains



J. MENDEL



**PURPLE MAGIC**

PANTONE 19-3540  
C.57 M.100 Y.0 K.10



**CATHERINE MALANDRINO prominent colors** creamy white, metallic dark silver, deep chocolate, cold emerald, warm honey, rich bourgogne **inspiration** the “queens” of the world; the code of the new urban queen **signature color** rich chocolate **color philosophy** rich tones contrasted with a touch of metallic silver; ultra glossy textures in juxtaposition with matte surfaces



**BEHNAZ SARAFPOUR prominent colors** i always work with graphic color combinations such as black and white. **inspiration** i am inspired by the idea of all things traditional. the colors that i am working with are very rich, deep tones – dark reds, greens and blues.

BEHNAZ SARAFPOUR



**MINERAL RED**

PANTONE 17-1537  
C.0 M.90 Y.83 K.12



**RED MAHOGANY**

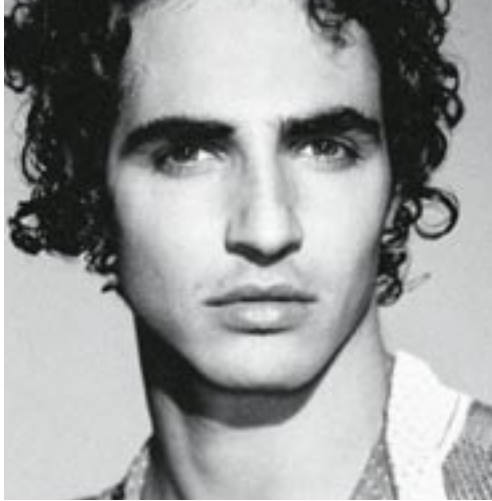
PANTONE 19-1521  
C.0 M.100 Y.90 K.55



CATHERINE MALANDRINO



PANTONE  
**FCR**  
**06** fashion color report  
fall two thousand six



**ZAC POSEN prominent colors** there is nothing sexier and more real than navy and jet. **inspiration** this season's girl is a "perfectionist rebel," so i chose colors that evoke her fierce and moody side as well as her classic luxury. **signature color** midnight navy **color philosophy** moody and rich with seductive classics: chocolate, jet and navy with sparks of sporty colors such as ochre, raspberry and billiard green



**BIJOU BLUE**

PANTONE 18-3921  
C.88 M.71 Y.25 K.3

ZAC POSEN





**ALVIN VALLEY prominent colors** total eclipse, bitter chocolate, blanc de blanc, wren, silver, after dark, rustic brown, loden green **inspiration** mary tyler moore meets hollywood; late '60s, early '70s intellectual and design movement **signature color** total eclipse, silver, rustic brown **color philosophy** unusual combinations of colors like in the furniture of that time



**DOUGLAS HANNANT prominent colors** chocolate brown, mocha, caramel, black, wine, pearl gray, ivory **inspiration** demure, soft, romantic **signature color** chocolate brown **color philosophy** sensitive, demure and understated



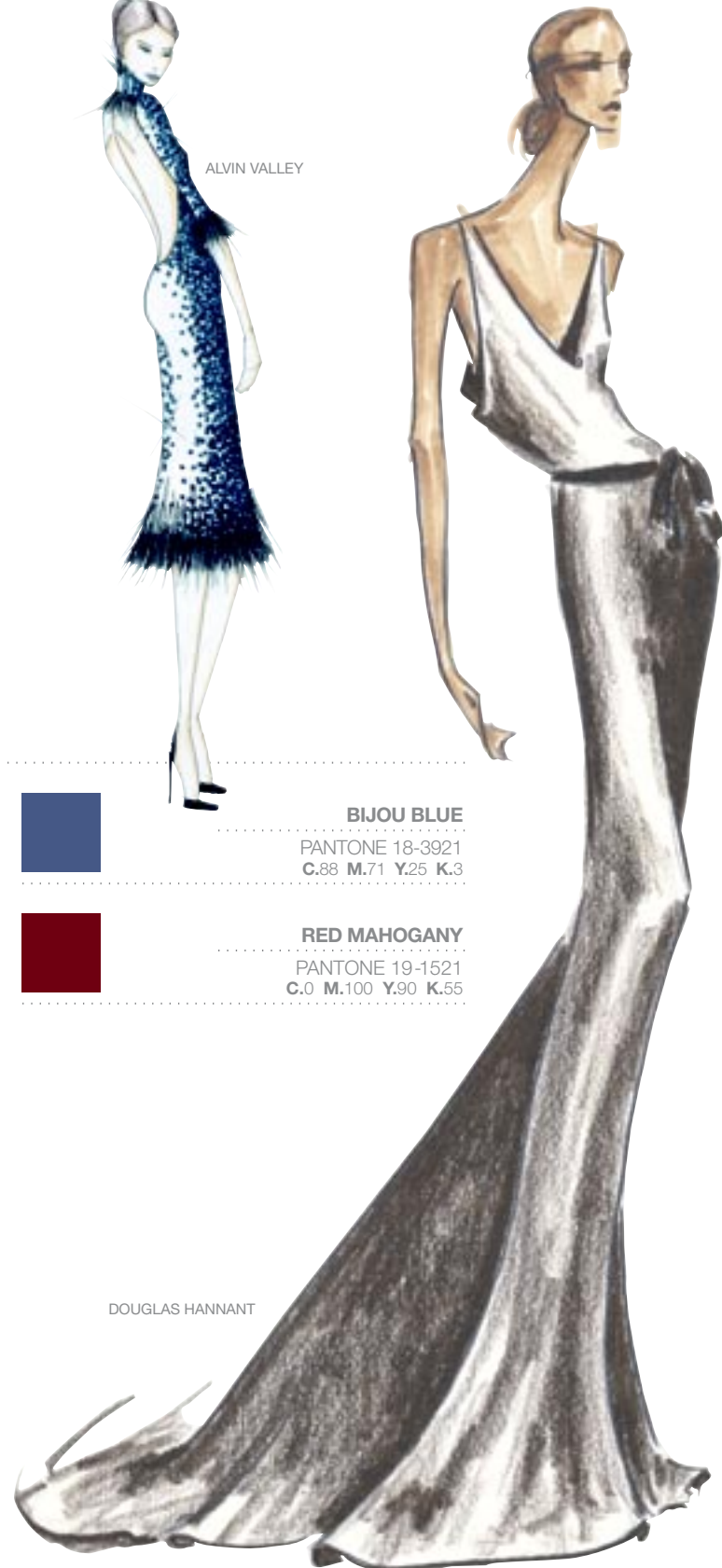
**BIJOU BLUE**

PANTONE 18-3921  
 C.88 M.71 Y.25 K.3



**RED MAHOGANY**

PANTONE 19-1521  
 C.0 M.100 Y.90 K.55



PANTONE

# FCR 06

fashion color report  
fall two thousand six



**PETER SOM prominent colors** fall 2006 is about a graphic mix of jet black and cool dove gray with antique white. warm shades of reds – from pale rose to lipstick – add femininity. **inspiration** cecil beaton's ascot from *my fair lady* **signature color** dove gray **color philosophy** this season a graphic but feminine combination of colors keeps it clean and sleek without being overpowering.



PETER SOM



**FROST GRAY**

PANTONE 17-0000

C.2 M.2 Y.5 K.50





**KATHRYN DIANOS FOR AUSTIN REED** prominent colors warm, earthy neutrals such as camel, mahogany, maple leaf, forest green and vicuna **inspiration** the colors of the woods, pinecones, dry leaves and a source of nature inspire the collection. **signature color** camel **color philosophy** river thames, sherwood forest, balmoral and sloane street combine warm, earthy natural colors that give the collection an organic feel.



**NANETTE LEPORE** prominent colors lacquer red, boudoir beige, smoky gray, jet black, gunmetal **inspiration** the salons of edwardian england; the heart of artistic bohemia **signature color** lacquer red



**MINERAL RED**

PANTONE 17-1537  
 C.0 M.90 Y.83 K.12



**GOLDEN OCHRE**

PANTONE 16-1346  
 C.0 M.52 Y.100 K.7



**RED MAHOGANY**

PANTONE 19-1521  
 C.0 M.100 Y.90 K.55



AUSTIN REED

NANETTE LEPORE





**CYNTHIA ROWLEY prominent colors** intense blues like cobalt (PANTONE 18-3849TP and PANTONE 17-4433TP) saturate the fall 06 collection. navy, red and yellow (PANTONE 19-4241TP, PANTONE 18-1761TP and PANTONE 12-0804TP) are also prominent. **inspiration** psychology and the exploration of the mind, the collection will experiment with unexpected pairings of color.



**CYNTHIA STEFFE prominent colors** i'm working with concentrated colors and smoky complements that have an aged look: smoky yet intense blues, rosy mauves, etc. **inspiration** classic menswear, i'm using feminine hues that work well as complements to a menswear base. **signature color** a saturated blue-violet **color philosophy** colors that are fresh and flatter the wearer



**BIJOU BLUE**

PANTONE 18-3921  
C.88 M.71 Y.25 K.3



**FROST GRAY**

PANTONE 17-0000  
C.2 M.2 Y.5 K.50



CYNTHIA ROWLEY



CYNTHIA STEFFE

PANTONE  
**FCR**  
**06** fashion color report  
fall two thousand six



**NICOLE MILLER** prominent colors olive, teal, tobacco, claret **inspiration** byzantine plates **signature color** olive **color philosophy** i love unusual color combinations such as wine with teal and brown.

NICOLE MILLER



**GOLDEN OCHRE**

PANTONE 16-1346  
C.0 M.52 Y.100 K.7



**VETIVER**

PANTONE 17-0613  
C.0 M.1 Y.30 K.50



**NAEEM KHAN prominent colors** black, espresso brown, dusty pink and a special xviii century blue called bleu natier **inspiration** traveling to versailles last year; marie antoinette years **signature color** bleu natier, dusty pink **color philosophy** pairing more vibrant colors with black and brown colors



**ESTEBAN CORTAZAR prominent colors** dusty shades of blue, smoky rose, antique gold and champagne **inspiration** 17th century dusty shades of color and delicate textures. the beauty and movement captured in degas' ballerina paintings and the lines, shapes and shadows of the female body. **signature color** dusty pink and blue **color philosophy** dusty shades bring a feeling of soft delicate beauty and antiquity.



NAEEM KAHN



ESTEBAN CORTAZAR



**BIJOU BLUE**

PANTONE 18-3921  
C.88 M.71 Y.25 K.3



**Y & KEI prominent colors** primary colors: ermine white, almond, gold, carbon black. outstanding accent colors: ink blue, lavender, sensual purple, amethyst **inspiration** images of a crisp winter scene. the pureness of white and natural colors enhanced with rococo inspired details **signature color** ink blue **color philosophy** a cool elegance of sharp white and natural colors accented with rich and ornate colors



**ALICE ROI prominent colors** black and white, and a light ashy gray, high impact burnt sienna, washed out teal – all the colors look as if they were once bright and have now faded or oxidized. think old polaroid. **inspiration** washy shades of burnt sienna and raw umber with bold black and white **signature color** burnt sienna **color philosophy** crisp blacks and whites alongside washed out acidic colors



**BIJOU BLUE**

PANTONE 18-3921  
 C.88 M.71 Y.25 K.3



**FROST GRAY**

PANTONE 17-0000  
 C.2 M.2 Y.5 K.50



PANTONE®  
**FCR**  
**06** fashion color report  
 fall two thousand six



**WUNDERKIND BY WOLFGANG JOOP**

**prominent colors** colors for the fall 06 collection are muted earth tones: brick red, saffron, camel, midnight blue, gray and black.



**PAM DEVOS FOR PAMELLA ROLAND**

**prominent colors** seasonal fall colors including charcoal, moss green, copper, dark ruby red and deep jewel-tone blue. a subtle black undertone adds a sophisticated feel. **inspiration** artist john singer sargent and his painting "madame x" influenced the subtle sophisticated color references in the collection. the colors include a wide range of oranges, yellows and grays. **signature color** navy and deep blue tones **color philosophy** infusing the rich and sophisticated colors of sargent's portraits and landscapes



**MINERAL RED**

PANTONE 17-1537  
 C.0 M.90 Y.83 K.12



**GOLDEN OCHRE**

PANTONE 16-1346  
 C.0 M.52 Y.100 K.7



**VETIVER**

PANTONE 17-0613  
 C.0 M.1 Y.30 K.50



WUNDERKIND



PAMELLA ROLAND

PANTONE  
**FCR**  
**06** fashion color report  
fall two thousand six



**BABY PHAT BY KIMORA LEE SIMMONS**

**prominent colors** baby phat's fall 2006 collection is about luxurious colors mixed with contrasting accents that punctuate our color story, starting with cool gray tones that transition into warm tones of rich burgundies and browns that are weaved with rich metallic hints. **inspiration** the upcoming baby phat fall 2006 collection is inspired by the elegance and panache of 20th century red carpet glamour. expect to see vamped-up suits, dresses, prints and fabrics where retro glam meets hip-hop royalty. **signature color** this season brown tones with pastel accents will be all the rage. **color philosophy** luxury and royalty define the baby phat color philosophy for fall 2006.

BABY PHAT



**RED MAHOGANY**

PANTONE 19-1521  
C.0 M.100 Y.90 K.55



**APPLE CINNAMON**

PANTONE 17-1045  
C.0 M.29 Y.79 K.18



**GOLDEN OCHRE**

PANTONE 16-1346  
C.0 M.52 Y.100 K.7



**AKIKO OGAWA prominent colors** graduations of gray, gold: PANTONE 13-0000TP moonbeam, PANTONE 15-1305TP feather gray, PANTONE 17-6205TP elephant skin, PANTONE 18-0403TP dull gull gray **inspiration** this season i was inspired by images of paris in the 1920s by jacques henri lartigue, most particularly a photograph of wilting flowers. **signature color** PANTONE 15-1305TP feather gray **color philosophy** for this fall, i wanted my colors to be highly nuanced and evoke a classical, refined ambience. for me, this is manifested as a cloudy, hazy palette of graduations of gray from smoky slate to charcoal.

AKIKO OGAWA



**PALE KHAKE**

PANTONE 15-1216  
C.15 M.15 Y.46 K.3



**VETIVER**

PANTONE 17-0613  
C.0 M.1 Y.30 K.50



**FROST GRAY**

PANTONE 17-0000  
C.2 M.2 Y.5 K.50





**LAURA PORETZKY FOR ABAETÉ** prominent colors titanium, sapphire navy and onyx. the combinations of sapphire navy and wisteria and onyx and ginger.  
**inspiration** i was inspired by the warm tones combined with black in furniture made by bugatti, and my accents were inspired by the jewel tones that marioni fortuny used in his silk pleated fabrics. **signature color** warm gray and navy  
**color philosophy** mix dark with dark



**YIGAL AZROUEL** prominent colors eggplant, mulberry, lilac, cobalt blue, midnight blue, ochre, army green, black, pearl and white **inspiration** gauguin **signature color** eggplant, shades of purple **color philosophy** expect the unexpected: mustard and midnight, olive and navy, cobalt and pearl.



**SIMPLY TAUPE**

PANTONE 16-0906  
 C.0 M.9 Y.25 K.27



**PURPLE MAGIC**

PANTONE 19-3540  
 C.57 M.100 Y.0 K.10



**RED MAHOGANY**

PANTONE 19-1521  
 C.0 M.100 Y.90 K.55



YIGAL AZROUEL



ABAETÉ

PANTONE  
**FCR**  
**06** fashion color report  
 fall two thousand six



**CHARLOTTE RONSON prominent colors** cornflower blue, boysenberry reds, sandalwood brown. i chose a very warm color palette for a cold fall. **inspiration** the storybook, hansel and gretel **signature color** prussian blue **color philosophy** always embrace color for fall.



**JAMES COVIELLO prominent colors** midnight teal, chartreuse, golden olive and smokey brown; plum wine, lavender, dusty tangerine and matte fuchsia; tarnished gold, faded salmon and khaki olive **inspiration** this season, the english interwar years (wwi and wwii) and the artists, tastemakers and aristocrats who peopled them are my inspiration. **signature color** midnight teal **color philosophy** jeweled tones faded by the sun



**RED MAHOGANY**  
 PANTONE 19-1521  
 C.0 M.100 Y.90 K.55



**BIJOU BLUE**  
 PANTONE 18-3921  
 C.88 M.71 Y.25 K.3



**PALE KHAKE**  
 PANTONE 15-1216  
 C.15 M.15 Y.46 K.3



CHARLOTTE RONSON



JAMES COVIELLO

# MUST-HAVE ITEM FOR FALL 06

**AKIKO OGAWA** Wrap coats in PANTONE 16-1305TP String

**ABAETÉ** The skinny pant and long jackets will be the must have items for fall.

**ALICE ROI** A Burnt Sienna wool jersey dress

**ALVIN VALLEY** Crystal beaded minidress with matching headband. Of course the impeccable fit of double cashmere AV classic pants.

**AUSTIN REED** Suede jacket in Camel or Brown

**BABY PHAT BY KIMORA LEE SIMMONS** Baby Phat dress embellished with fur and intricate beading in an either Midnight or Chocolate tone

**BETSEY JOHNSON** A bow tie and Black satin

**MICHAEL VOLLBRACHT FOR BILL BLASS** A Chartreuse double-faced cashmere swing coat

**CATHERINE MALANDRINO** Deep Chocolate and Bourgogne transparent tulle dress with handcrafted lace

**CHARLOTTE RONSON** My double-breasted tailor stripe cropped trench jacket – in Cornflower Blue of course.

**DANA BUCHMAN** A beautifully tailored knit jacket in Smoke Gray

**DIANE VON FURSTENBERG** A printed wrap dress in Red, Camel and Black

**DOUGLAS HANNANT** Olive Green Swakara fitted jacket

**ESTEBAN CORTAZAR** A Dusty Blue satin structured gown that embodies the lines, shapes and shadows of the female figure

**J. MENDEL** Custom-colored sables in either Chalk or Chestnut

**JAMES COVIELLO** Front-pleated chiffon blouse with neck bow in Dusty Mauve

**KENNETH COLE** Paper-thin waxed leather wrap coat in Black

**NAEEM KHAN** An Espresso Brown capulet

**NANETTE LEPORE** A decadent Red velvet dance dress

**NICOLE MILLER** Hooded blouson sweater in Tobacco or Olive

**PAMELLA ROLAND** Our multi-colored paisley brocade coat with shawl collar trimmed in leather – it boasts a beautiful mix of fall-toned Greens, Off-White, Copper and Brown

**PETER SOM** Dove Gray Metallic lace and tulle cocktail dress

**TRACY REESE** A structured frock in vampy Aubergine

**WILLOW** So far there is a sensational shirt/jacket which I love in Petrol Blue

**Y & KEI** Chic, sharply tailored suit in Ink Blue

**YIGAL AZROUEL** Cotton and silk voile blouse in washed Lilac with hand embroidery detail and ruched neckline

**ZAC POSEN** Our great tailored cocktail dress in Midnight Navy and Jet



PANTONE — the global expert in all things color — created PANTONE UNIVERSE on the simple principle that color is for everyone. The latest **PANTONE UNIVERSE Collection**, with a new home in Tokyo, makes it easy for design aficionados of all kinds to surround themselves with bold hues and to style their homes with professional ease.

With striking, modern designs, PANTONE UNIVERSE brings color into the home through a bold collection of **bed, bath, kitchen and lifestyle products**. Like only Pantone can do, every chair, sheet, pillowcase and slipper features designs that either incorporate or are reminiscent of our signature PANTONE Color Chip.

The PANTONE UNIVERSE Home Collection, in partnership with three manufacturers and under the IFS Japan umbrella, will be available throughout Japan in 2006 with plans to expand into a global lifestyle brand in the future. For licensing opportunities, please email [contact@pantoneuniverse.com](mailto:contact@pantoneuniverse.com).

**PANTONE®**

[www.pantone.com/fall06](http://www.pantone.com/fall06)

# EXPERTS TALK ABOUT FALL 06

## HOW HAS THE HIGHLY POPULAR “NATURAL AND ORGANIC” TREND – FROM FOOD TO SKINCARE TO TEXTILES – INFLUENCED CONSUMERS’ FASHION CHOICES? WHAT ROLE DOES COLOR PLAY IN THIS MARKET?

**MICHAEL FINK, SENIOR FASHION DIRECTOR, SAKS FIFTH AVENUE** It takes hours to look natural! Naturals and organics can ooze comfort and cool sophistication when applied with care. One misstep and suddenly you’re an earth mother poster child. Color is a wonderful solution to pop all of those Wheat, Oat and Bran colors.

**CANDY PRATTS PRICE, EXECUTIVE FASHION DIRECTOR, STYLE.COM** Consumers are familiar with the word “organic” in their food so they trust skincare products and textiles in the same way – healthier for you and your body. Pigments like Terracotta, Gold and Henna add the romance.

**SIMON DOONAN, CREATIVE DIRECTOR, BARNEYS NEW YORK** People have become more nuanced in their understanding of subtle organic tones – there are millions of subtle organic tones and a million ways to be sludgy.

**ROOPAL PATEL, SENIOR WOMEN’S FASHION DIRECTOR, BERGDORF GOODMAN** The natural and organic trend has been very influential among consumers. The direction for spring has been toned down and understated. Attention to texture and diversity within this color palette is key. Crochet, lace, appliqué and handcrafted techniques are important. Hair and makeup are much cleaner and natural. Home elements demand a much more organic approach to different fabrications. Natural and organic may be toned down, but the need for quality and luxury remains important to the consumer in regard to some of the “key” spring trends.

**NINA GARCIA, FASHION DIRECTOR, ELLE** Dior’s 2006 show was the best example of the natural trend. Ever theatrical in makeup and styling, John Galliano opted for an entirely nude palette. The message was loud and clear and the natural look of minimal makeup made an impact. Colors have been influenced by the increased use of natural fabrics: raffia, wood, crochet, wicker, linens and burlap, and all man-made fabrics have accented both clothing and accessories. The colors tend to be more sober and less saturated.

**SASHA CHARNIN MORRISON, FASHION DIRECTOR, ALLURE** Natural Oat Couture – every designer on this side of the pond and across it romanced neutral shades for spring. It’s the new Black. They layered it; they remixed it. As for consumers becoming attracted to it, it’s the news, it’s what celebrities will be photographed in. It will be featured in editorials in magazines and impossible to ignore at retail. The way it’s merchandised on the floor in stores, consumers will be interested in the fresh, neutral palette which can be mixed with just about anything – lace, color, jeans, accessories, dogs, children. The challenge/fun part (for some) will be choosing the right nude/neutral for your particular skin tone, much like matching a foundation to your skin.

**THOM FILICIA, INTERIOR DESIGN EXPERT, NBC/BRAVO’S QUEER EYE** Consumers’ fashion choices are being influenced by the popular “natural and organic” trend through the use of soft tailoring constructed in cashmere, flax, Sea Island cotton and other natural fabrics. Color plays an important role in this market because consumers don’t see “natural and organic” as a color, they see it as Beige. But, in fact, there are many colors. Utilizing an earthy palette with beautiful textures and inviting colors such as Coffee, Indigo, Moss, Stone, Wheat and Maize is the new face of natural.

## HOW HAS THE HIGHLY POPULAR “ORGANIC AND NATURAL” TREND INFLUENCED YOUR CHOICES IN COLOR AND TEXTURE AS A DESIGNER?

**ABAETÉ** I always like organic tones to complement my brighter shades.

**AKIKO OGAWA** To be honest it wasn’t central to my work for this season...but in terms of fabric I have gone for a lot of natural fabrics, most notably silk, and the colors in my collection are soft, serene and essentially natural.

**ALICE ROI** There are a lot more Creams, Tans and mélanges present in the collection because of the organic trend.

**CHARLOTTE RONSON** I have always loved earthy tones and natural earthy fabrics that feel like you are wearing a second skin.

**DANA BUCHMAN** The colors are more muted and natural in feeling.

**DEREK LAM** This season the collection is really moving toward sharp, graphic, intense almost neon color while keeping a dark and moody underlying palette.

**DIANE VON FURSTENBERG** It hasn’t this season.

**ESTEBAN CORTAZAR** Organic tones and textures make me feel more in touch with nature as a designer and they give a certain warm softness to the designs.

**J. MENDEL** Our colors are organically based and our textures use many raw edges to create a fragile feeling in the clothes and furs.

**KENNETH COLE** Natural jewel tones and shades of neutral Browns

**NICOLE MILLER** I’m using a lot of metal fabrics which guard against harmful rays in the environment.

**PAMELLA ROLAND** The Deep Blue and Black “Leaf” patterned brocade is influenced heavily by nature. The collection contains a plethora of natural fibers from cashmere and silk to a truly unique Gray, Black and White mohair.

**PETER SOM** Not too much

**TRACY REESE** Incorporating wood in wonderful earthy neutral tones – all organic in coloration

**WILLOW** I do not use generic trends when selecting colors. I go by feelings I have for that collection and the colors appear to me.

**Y & KEI** The sharpness and cleanliness of pure White snow on a winter’s day... the natural shades and textures of Almond and muslin... the rich earthliness of Charcoal... evoking the bedazzlement of jewels and lustrous Golds

**YIGAL AZROUEL** The biggest influence has been in fiber and yarn selection. I don’t really alter my collections for trend so you wouldn’t see a heavy influence, only subtle.

**ZAC POSEN** The “organic and natural” trend has more influenced my choices in form this season.

**PANTONE®**

[www.pantone.com/fall06](http://www.pantone.com/fall06)

PANTONE®

# FCR 06

fashion color report  
fall two thousand six



## SIMPLY TAUPE

PANTONE 16-0906

C.0 M.9 Y.25 K.27



## PALE KHAKI

PANTONE 15-1216

C.15 M.15 Y.46 K.3



## APPLE CINNAMON

PANTONE 17-1045

C.0 M.29 Y.79 K.18



## GOLDEN OCHRE

PANTONE 16-1346

C.0 M.52 Y.100 K.7



## MINERAL RED

PANTONE 17-1537

C.0 M.90 Y.83 K.12



## FROST GRAY

PANTONE 17-0000

C.2 M.2 Y.5 K.50



## VETIVER

PANTONE 17-0613

C.0 M.1 Y.30 K.50



## BIJOU BLUE

PANTONE 18-3921

C.88 M.71 Y.25 K.3



## PURPLE MAGIC

PANTONE 19-3540

C.57 M.100 Y.0 K.10



## RED MAHOGANY

PANTONE 19-1521

C.0 M.100 Y.90 K.55

PANTONE Fashion Color Report Vol. 25, February 2006. Pantone, Inc. 590 Commerce Blvd., Carlstadt, NJ 07072-3098. Tel: 201.935.5500 Fax: 201.896.0242. PANTONE Colors displayed here may not match PANTONE-identified standards. Consult current PANTONE for fashion and home color system publications for accurate color. PANTONE® and other Pantone, Inc. trademarks are the property of Pantone, Inc. EPSON, EPSON Stylus and Ultrachrome are trademarks or registered trademarks of Seiko Epson Corporation. ©Pantone, Inc., 2006. All rights reserved.