



**PANTONE®**

Fashion  
Color Report  
Spring 2006

# blue skies ahead

*New York Fashion Week Spring 2006, September 9-16, 2005*

New York designers are awash in America's favorite color for Spring 2006. From sea to shining sea – the Mediterranean and Caribbean to the South Pacific and Atlantic – they have collected shades ranging from aquatic **Blue Tint** to placid **Skyway** and seaworthy **Deep Ultramarine**. Smooth sailing typifies the calm and effortless attitude infusing the season.

Breezy, carefree hues like **Lily Green**, fresh **Viola**, juicy **Melon** and **French Vanilla** – perhaps borrowed from a Matisse – take the edge off, while Pink re-enters the palette as **Cameo Pink** after a brief respite.

With the influence of the beach, the desert, and natural, organic materials, neutrals take a stand with a range of quiet shades represented by soft **Sand Dollar** and warm **Clove**. The harmonious combination of Brown with Blue-Green continues to be strong this season, as exemplified by the frequent pairing of Clove and Blue Tint.

The purity of graphic Black and White resonates widely, whether used in tandem, combined with nautical Deep Ultramarine for a crisp effect, modulated by neutrals, or accented with color.

“Designers have taken a deep breath for Spring 2006,” observes Leatrice Eiseman, executive director, Pantone Color Institute®. “After several seasons of ‘color! color! color!’, it’s time to relax a little. Color this season is toned down, more muted – they’re not pastels, not brights, but a nuance in-between. We see this relaxation in the prevalence of Blues, neutrals, and the classicism of Black and White. Designers are still having fun, but don’t need the stridency.”

*For 12 years, Pantone, Inc. has surveyed the designers of New York Fashion Week to bring you the season's most important color trends. This sketchbook previews color for Spring 2006. It is also available online at [www.pantone.com/spring2006](http://www.pantone.com/spring2006).*



**French Vanilla** PANTONE 12-0722



**Sand Dollar** PANTONE 13-1106



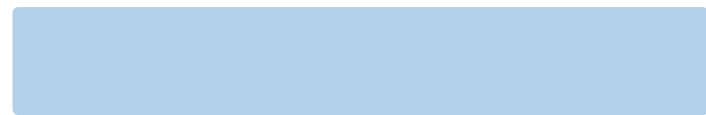
**Blue Tint** PANTONE 13-4910



**Cameo Pink** PANTONE 14-2307



**Lily Green** PANTONE 13-0317



**Skyway** PANTONE 14-4112



**Viola** PANTONE 16-3815



**Melon** PANTONE 16-1442



**Clove** PANTONE 18-1320



**Deep Ultramarine** PANTONE 19-3950



**Peter Som**

**PROMINENT COLORS**

Nautical Navy combined with Warm White, punctuated by Celery Green, Sun Yellow, and shades of Blue from Cloisonné to Wedgwood. Matte Gold adds shimmer and luster.

**INSPIRATION**

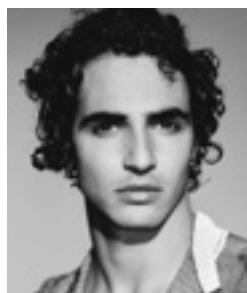
A thoroughly modern Madame Butterfly – a mix of boyish sportif daywear with hyper-delicate femininity

**SIGNATURE COLOR**

Twilight Blue

**COLOR PHILOSOPHY**

Feminine strength combined with fragile beauty



**Zac Posen** (on the cover)

**PROMINENT COLORS**

A palette of foreign spices such as Sage, Mint and Turmeric, with a feminine spectrum of Blue Violet and Butter Cream White

**INSPIRATION**

The “cool” of actress Monica Vitti and the dance-like silhouettes of the Ballet Russe

**SIGNATURE COLOR**

Mandarin Orange

**COLOR PHILOSOPHY**

We retreated into the mindset of a perpetual vacation, indulgent in luxurious Mediterranean and European cuisine. We maintained the idea of soft exoticism and foreign travel.

**Peter Som**



**French Vanilla**  
PANTONE 12-0722

**Skyway**  
PANTONE 14-4112



**Michael Kors**

**PROMINENT COLORS**

Ivory and White, Cobalt  
Blue, Black, with sunbaked  
Red and Orange accents

**INSPIRATION**

American Style

**SIGNATURE COLOR**

Ivory

**COLOR PHILOSOPHY**

Tonal mixes

Michael Kors



Fresh Vanilla  
PANTONE 12-0722



**Y & Kei**

**PROMINENT COLORS**

Chalk White, Silver Salt, Cool Gray, Champagne, Vanilla Cream, Chic Black. Outstanding colors are Melon Orange, Citron Yellow and Parrot Blue.

**INSPIRATION**

Luxurious comfort defined by sophisticated elegance – a woman who moves with a refined grace and ease, reflecting her strong sense of self. As “water the earth” is our continual theme, nature always plays into the collection. We see the lightness of an exquisite bird in flight exemplifying this feeling of freedom of style. Cate Blanchett is such a bird.

**SIGNATURE COLORS**

Ivory, Muslin, Caviar

**COLOR PHILOSOPHY**

Has the feeling of a textured match of luxurious and elegant color, based on natural color shades



**Proenza Schouler**

**PROMINENT COLORS**

PANTONE 18-0403 Dark Gull Gray, PANTONE 15-0646 Warm Olive, PANTONE 14-4804 Blue Fox, PANTONE 15-4703 Mirage Gray, PANTONE 15-0513 Eucalyptus, PANTONE 14-3803 Hushed Violet, and a few tones of White and Ecru

**INSPIRATION**

We were feeling a return to neutrals on the lighter side of the spectrum – no harsh contrasts. A sense of purity and cleanliness dominates the tone.

**SIGNATURE COLOR**

Whites

**COLOR PHILOSOPHY**

Clean, washed-out colors – mainly highly tinted colors, some dark tones as well, with no midtones and an accent of Yellow



Proenza Schouler



Sand Dollar  
PANTONE 13-1106



### Carolina Herrera

#### PROMINENT COLORS

Sky Blue, Coffee Bean, Flamingo Pink and Thyme are used throughout the collection. They are mixed together to create prints or to accentuate an embroidery. Ivory and Black neutralize the collection.

#### INSPIRATION

The Austrian art movement. Wiener Werkstatte was a major influence. It called for unexpected color and fabric combinations as well as the union of form and function. Matisse's collection of colorful fabrics, patterned screens, and his wonderful paintings were inspiring as well.

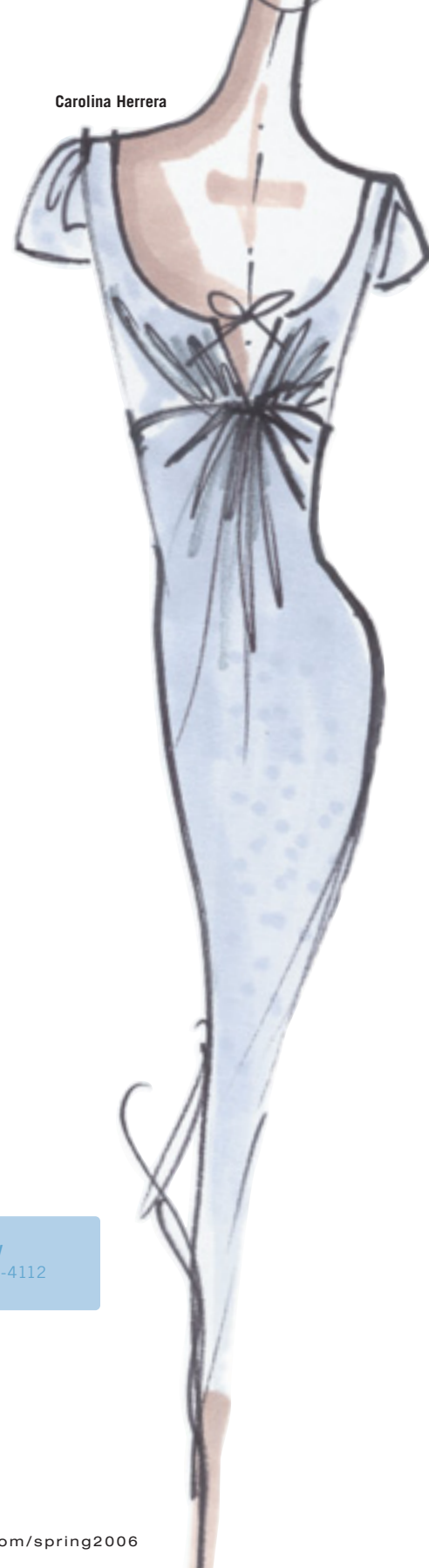
#### SIGNATURE COLOR

Sky Blue

#### COLOR PHILOSOPHY

Strong colors are essential but can be softened by creating variations within the same color.

Carolina Herrera



Skyway  
PANTONE 14-4112



**Anna Sui**

**PROMINENT COLORS**

Hothouse Orchid,  
African Violet, Bourbon  
Rose, Bleeding Heart,  
Fire Azalea, Buttercup,  
Shamrock, Spearmint,  
Blue Bell, Black  
Narcissus, Lily White

**INSPIRATION**

Wiener Werkstatte  
Decorative Arts

**SIGNATURE COLOR**

Orchid

**COLOR PHILOSOPHY**

Featherweight exoticism



**Cynthia Steffe**

**PROMINENT COLORS**

Clean, crisp colors such  
as Poppy Red, Jade Green,  
Lemon Yellow and Popsicle  
Purple played off of White,  
Black and Gunmetal. Accent  
colors are tonal hues of the  
same, such as Mint, Lilac  
and Grapefruit.

**INSPIRATION**

Pattern choices are  
very graphic and bold.  
Color-blocked prints  
such as shapes found  
in '60s architecture.

**SIGNATURE COLORS**

Clean, crisp brights playing  
off of Black and White

**COLOR PHILOSOPHY**

Clean, clear and happy



## Shelly Steffee

### PROMINENT COLORS

Vignettes of Black and White, Buff and Midnight, Nude and Yolk Yellow

### INSPIRATION

Poetry, world travel, dancers

### SIGNATURE COLOR

Nude

### COLOR PHILOSOPHY

Neutrals with neutrals.  
Neutrals with engineered color.



## Kenneth Cole

### PROMINENT COLORS

Blue-to-Gray story: Navy Blue, Twilight Blue, Cornflower Blue, Topaz Blue, Gravel Blue into Graphite Gray and Smoke Gray. Ginger Yellow, Pebble Brown, Earth Brown. Green story: Moss Green, Sage Green, Kiwi Green. Purple story: Port Purple, Eggplant Purple, Magenta, Shell, Light Purple-Pink.

### INSPIRATION

We wanted a muted pastel palette that would lend itself to the '40s sportswear mood.

### SIGNATURE COLOR

Shades of Blue

### COLOR PHILOSOPHY

Muted pastels

## Shelly Steffee



## Kenneth Cole



Sand Dollar  
PANTONE 13-1106





**Nicole Miller**

**PROMINENT COLORS**

Turquoise and Tobacco, mixed metallics, Light Olive and Khaki, White, Pale Yellow

**INSPIRATION**

Movies from the Sixties and Seventies

**SIGNATURE COLOR**

Baltic Blue

**COLOR PHILOSOPHY**

Mixing darks with lights and brights. Mixing Tobacco and Berry with spring colors.



**Tracy Reese**

**PROMINENT COLORS**

Buttercup, Lingerie Pink, Cornflower, Pecan, Rich Crème, Pale Lime, Rose Carthame, Sweet Blue, Spring Blue, Citrus and Sweet Pink

**INSPIRATION**

Eras: Belle Époque mixes with Sixties for a modern femininity. Twiggy, Mia Farrow, turn of the century Parisian courtesans and southern belles. Places: India, Africa and Appalachia at the turn of the century and in the Sixties. Art: John Singer Sargent's *Madame X* and the young girls of Clemente portraits. Film/Literature: Henry James' *Portrait of a Lady*, *The Age of Innocence*, *Howard's End*, *Alfie*, *Rosemary's Baby*, *Grey Gardens*. Music: Dionne Warwick and Burt Bacharach, classic songs of love and loss, Rieg waltzes.

**SIGNATURE COLOR**

Vintage White

**COLOR PHILOSOPHY**

Feminine, sweet, soft and creamy



Nicole Miller



Tracy Reese





**Betsey Johnson**

**PROMINENT COLORS**

Sand-Tan-Taupe-Putty-Nutty Golden hues hold the whole collection together, mixed with medium-weight, real, pretty “girlie” colors – the Ballerina Pinks, Pool Aquas, Robin’s Egg. Also Buttercup, Shrimp, Luscious Lilac and White White White.

**INSPIRATION**

My “girl.” She always wants to look pretty and hip and cool.

**SIGNATURE COLORS**

Golden touches and Yellow

**COLOR PHILOSOPHY**

Mix it all up.



**Dana Buchman**

**PROMINENT COLORS**

Brilliant Greens; military Khakis mixed with pretty Aegean Blues; sugary Lavenders and Pinks

**INSPIRATION**

Naïve details from the late ‘50s and early ‘60s

**SIGNATURE COLORS**

Refreshing mentholated Blues and Greens, Teapot Pinks and Corals



Betsey Johnson



Dana Buchman



Viola

PANTONE 16-3815



Cameo Pink

PANTONE 14-2307



Blue Tint

PANTONE 13-4910



French Vanilla

PANTONE 12-0722



**Michael Vollbracht  
for Bill Blass**

**PROMINENT COLOR**

Black

**INSPIRATION**

Beaches. And nothing looks better than Black with Sand.

**SIGNATURE COLOR**

Arabian Sands

**COLOR PHILOSOPHY**

Black with hints of all color



**Alice Roi**

**PROMINENT COLORS**

Light Peach, Crème, Gold, Cool Light Gray, Black and White next to Grays. A few shots of Bright Red and Hot Pink.

**INSPIRATION**

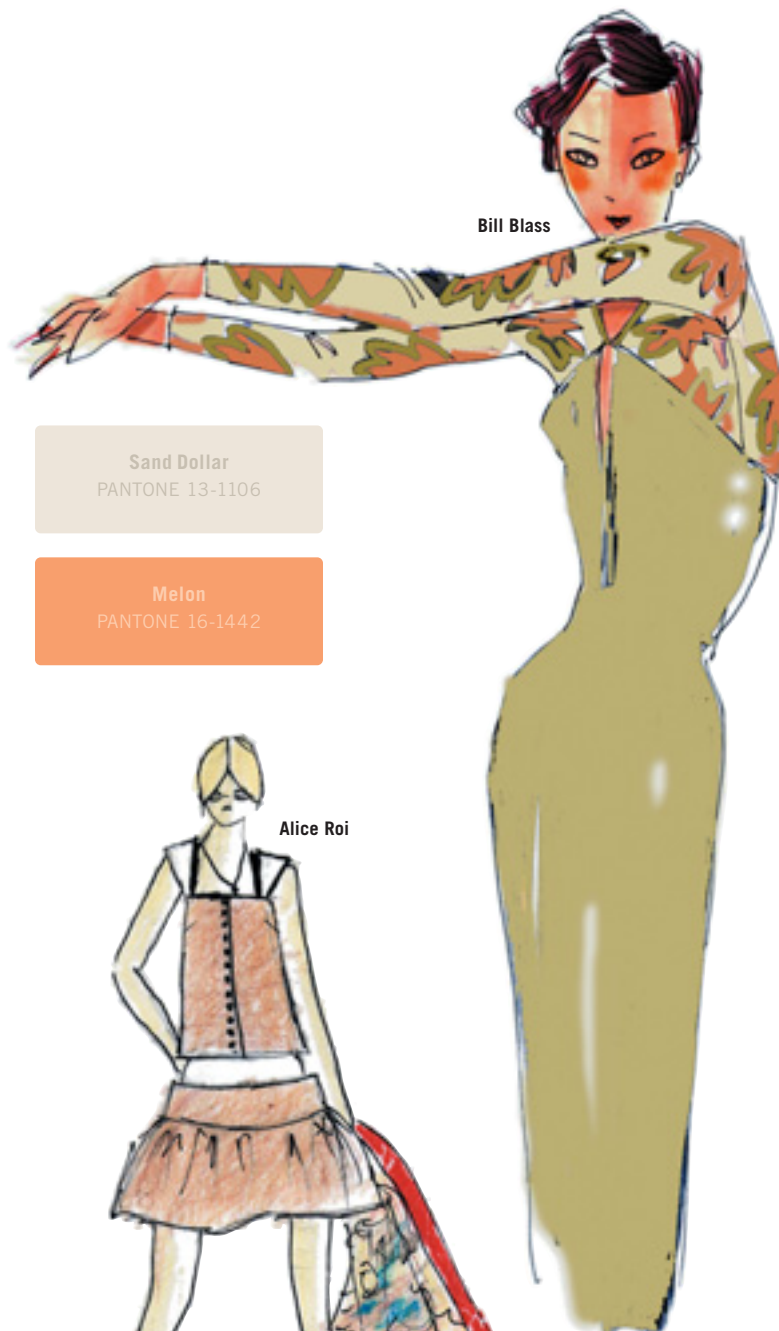
During the mourning of the Pope, there was so much beautiful imagery: papal robes in bright Reds alongside White laces; Gray skies, Peach rooftops, Red robes.

**SIGNATURE COLOR**

Peach

**COLOR PHILOSOPHY**

Light, washed-out colors play up Black and Whites.



Bill Blass



Sand Dollar  
PANTONE 13-1106



Melon  
PANTONE 16-1442



Alice Roi



**Luca Luca by Luca Orlandi**

**PROMINENT COLORS**

Earth colors: different shades of Brown, Green and Ochre

**INSPIRATION**

A season of unique pieces, nostalgic dresses and tribal prints from around the world

**SIGNATURE COLOR**

Earth colors

**COLOR PHILOSOPHY**

Earth colors combined with bright Caribbean colors – Yellow, Reds, Turquoise and Orange



**Reem Acra**

**PROMINENT COLORS**

A warm treasure chest of royal color drenched and ripened by the sun: Pomegranate, Honey, Malachite, Gold, Copper, Bronze, Turquoise and Lapis Lazuli

**INSPIRATION**

The decadence eras and the glamorous women who lived during them. For example, Cleopatra, who surrounded herself with brilliant, symbolic color: Green for rebirth, Yellow in celebration of the sun, Turquoise for happiness, and of course her signature Gold, which meant eternity.

**SIGNATURE COLOR**

Gold, as always, used this season to complement and enhance colors created by the minerals and ores of the Earth

**COLOR PHILOSOPHY**

Layering fabrics and colors to create an illusion of antiquity. Bright colors that have been weathered by the sands of time, slightly antiqued yet still evoking an aura of richness, majesty and awe.



Luca Luca



Reem Acra



**Nanette Lepore**

**PROMINENT COLORS**

The pigments of the desert: sun-bleached Alabaster against Clay, Azure, Sun and shades of Cactus

**INSPIRATION**

The fanciful memories of summer road trips with my family on Route 66. The vivid colors of sun-drenched desert wildflowers against the Alabaster sand.

**SIGNATURE COLOR**

Sunset tones against Alabaster

**COLOR PHILOSOPHY**

The faded hues of hand-painted 1940s postcards



**Douglas Hannant**

**PROMINENT COLORS**

White, Salmon, Celery, Sunny Yellow

**INSPIRATION**

Time spent in Tangier this summer – sun-drenched White stucco and light, breezy fabrics

**SIGNATURE COLOR**

White

**COLOR PHILOSOPHY**

Sun and reflected light



French Vanilla  
PANTONE 12-0727



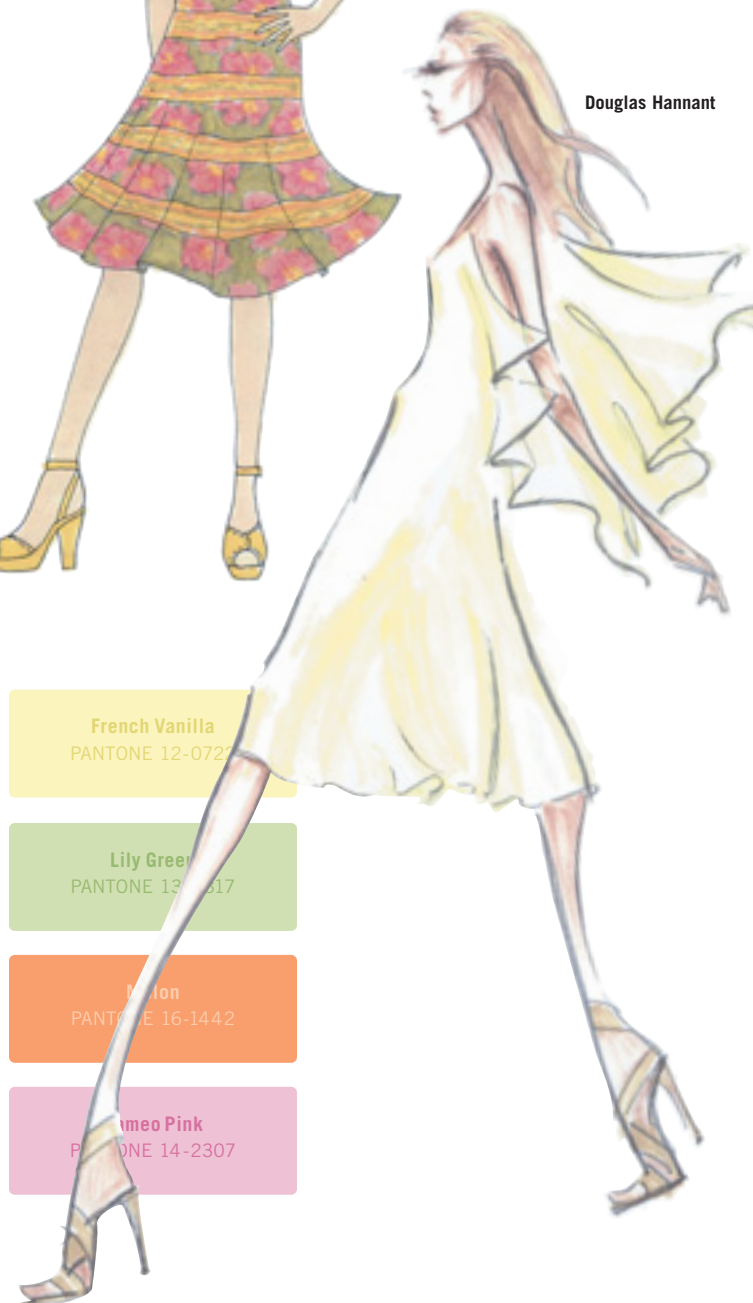
Lily Green  
PANTONE 13-6317



Salmon  
PANTONE 16-1442



Amaro Pink  
PANTONE 14-2307



**Tocca by Edoardo Mantelli and Samantha Sung**

**PROMINENT COLORS**

The collection is a celebration of Tahiti and the women of the South Seas. For us, that means prominent shades of Blue (Aqua, Indigo) combined with neutral shades like Beach Sand and Raffia, highlighted with more vibrant shades of Coral, Violet and Lemon Yellow.

**INSPIRATION**

We took inspiration from the film *Mutiny on the Bounty* starring Marlon Brando. His character's uniform of Deep Navy Blue juxtaposed with the Aqua of the sea inspired our use of Blues. The vibrance of the native women's dresses and skirts summarizes our use of jolting, more ethnic shades.

**SIGNATURE COLOR**

Our variety and variations on the color Blue

**COLOR PHILOSOPHY**

To embrace and convey the culture of Tahiti in a way that stays true to the native culture while still retaining the essence of Tocca



**Lela Rose**

**PROMINENT COLORS**

Black, White and Navy. These three colors have a very crisp feeling about them, like a "clean slate" to work from. I am also infusing a Terracotta-like hue mixed with a Royal Blue for hints of color.

**INSPIRATION**

I was inspired by Black and White photographs of tennis players in the 1950s and 1960s, which felt uniquely "All-American." My color choices for the collection also represent a very American approach to dressing, especially the use of Navy. It all lends itself to a playful, warm-weather feeling.

**SIGNATURE COLOR**

Either a Royal Navy Blue, very crisp in feel, or the Terracotta color we used in many of the evening-inspired pieces

**COLOR PHILOSOPHY**

You can mix any of the colors in my collection since they all complement one another. Contrast works well with the colors, since there are no muted tones. White pieces mix well with Black or Navy, yet contrast well with one another without seeming harsh.





**Wunderkind by Wolfgang Joop**

**PROMINENT COLORS**

Soft, light colors: Beige, White and Ivory. These are highlighted by faded pastels like Powder Pink and Aqua Blue. The frame for all these colors is Black.

**INSPIRATION**

English roses and the shadow created by the summer sun

**SIGNATURE COLORS**

White and Ivory

**COLOR PHILOSOPHY**

To highlight our soft palette of Beiges, Whites and Ivory with faded pastels, and frame all colors in Black



**Naeem Khan**

**PROMINENT COLORS**

Bright colors such as Coral (PANTONE 18-1649), Turquoise (PANTONE 14-4522) and Yellow (PANTONE 14-0850) associated with Beige and White

**INSPIRATION**

Colors inspired by natural organic materials – seashells, woods, raffia, etc.

**SIGNATURE COLOR**

Beige

**COLOR PHILOSOPHY**

A neutral base that enhances the strong colors of the collection



Wunderkind



Naeem Khan





**Esteban Cortazar**

**PROMINENT COLORS**

Pearl and Sea Foam, White with accents of Silver. Following the ocean Blues like Navy and Aqua with accents of iridescent mother of pearl. Finishing with Sand, Beige and Coral.

**INSPIRATION**

Love at first sight on a terrace by the sparkling Blue sea. A soft, delicate and elegant woman that is in touch with her nature and the one around her. She dreams of being a mermaid full of beautiful mystery.

**SIGNATURE COLOR**

Navy Blue

**COLOR PHILOSOPHY**

A transition through the sea and capturing all the aquatic elements



**Yigal Azrouel**

**PROMINENT COLORS**

Black and Ecrú; Mocha and Stark White with Powder Blues; neutrals with beautiful injections of color

**INSPIRATION**

I love the graphic effects of dark with light, but with more natural tones to soften the effect.

**SIGNATURE COLORS**

Ecrú and Sands, Navy and Powder Blue

**COLOR PHILOSOPHY**

Soft and subdued with shots of crispness



Esteban Cortazar



Yigal Azrouel

Deep Ultramarine  
PANTONE 19-3950





**Baby Phat**  
by Kimora Lee Simons

**PROMINENT COLORS**

Plenty of jewel-tone colors: Sapphire Blue, Peridot and Emerald Greens, Canary Yellow, Golds and Ruby Reds. And of course we are throwing in some fabulous signature animal prints!

**INSPIRATION**

The strength, sexiness and style of contemporary Hollywood divas, screen legends and icons who have given the world tour de force performances as some of the best characters of our time, such as Sharon Stone in *Casino*.

**SIGNATURE COLOR**

Salmon

**COLOR PHILOSOPHY**

Tons of bold colors that are rich and saturated, to induce feelings of power and personality



**Alvin Valley**

**PROMINENT COLORS**

I will have a lot of solid Black and solid White and Creams, but I am using warm and bright colors to add a sensation of excitement and a feeling of passion to perk up the somber feelings of the solids. It is a contrasting effect.

**INSPIRATION**

Seville in the Andalusian region of Spain, which is the very embodiment of the Spanish character and spirit. The women in exuberant Andalusian dresses walking on the streets and riding in carriages.

**SIGNATURE COLORS**

PANTONE 18-1660 Tomato, PANTONE 16-4529 Cyan Blue, PANTONE 16-0836 Rich Gold

**COLOR PHILOSOPHY**

To add contrasting colors against solid Blacks or Whites



**Baby Phat**

Sand Dollar  
PANTONE 13-1106

Melon  
PANTONE 16-1442

Clove  
PANTONE 18-1320



**Alvin Valley**



**Yeohlee**

**PROMINENT COLORS**

Lead, Loam, Milk Duds,  
Black, Pea Shoots,  
Solar White, Baby  
Bok Choy

**INSPIRATION**

The colors felt right for  
this particular spring.

**SIGNATURE COLOR**

An earthy palette

**COLOR PHILOSOPHY**

Anything goes.



**Badgley Mischka**

**PROMINENT COLORS**

Dusty Lilac/Mauve,  
Burnt Orange, Eggshell,  
Parchment, Espresso Brown

**INSPIRATION**

The transition of Hollywood  
from Black and White  
to Technicolor

**SIGNATURE COLOR**

Parchment

**COLOR PHILOSOPHY**

Neutrals with interesting,  
off-color accents

Yeohlee

Badgley Mischka



Clove

PANTONE 18-1320



Viola

PANTONE 16-3815

## what you **must have** for spring '06

**Alice Roi** Crème crepe A-line suit with enlarged Gold piping detail

**Alvin Valley** The ball skirts in bright Tomato Red

**Anna Sui** A light and easy chiffon dress in a Cream and Orchid print

**Baby Phat by Kimora Lee Simmons** A Mocha chiffon plunging v-neck knee-length cocktail dress

**Betsey Johnson** "Bloomer shorts" in any and every pattern and color

**Michael Vollbracht for Bill Blass** A little Black dress

**Carolina Herrera** An easy-to-wear cotton sundress in Sky Blue

**Cynthia Steffe** New sleek skirts cut in bright linens

**Dana Buchman** "Urban denim" – it has earned its place in our professional landscape

**Douglas Hannant** Breezy White silk gauze dresses – the spring dress is the star!

**Esteban Cortazar** My White silk jersey multiple-layered dress

**Kenneth Cole** Collarless cropped jackets with three-quarter sleeves in Cornflower Blue

**Lela Rose** A gorgeous box-pleated skirt made from Navy taffeta. I bleached-in an antique lace pattern at the hem, giving a White contrast to the entire piece for a refined, elegant look without feeling too pristine.

**Michael Kors** A romantic Ivory dress

**Naeem Kahn** An embellished skirt in Coral, Turquoise and Yellow

**Nanette Lepore** A va-va-voom flirty dress in sun-drenched desert hues

**Nicole Miller** An empire-waist jacket in Linen

**Peter Som** Navy and White chrysanthemum-print dress in chiffon with Chantilly lace trim

**Proenza Schouler** White lace dresses – very handcrafted and detailed

**Reem Acra** A hand-embroidered Gold tank top, which looks great for day yet can take you to the important gala evening event

**Shelly Steffee** White sleeveless tunic shirt

**Tocca** The cropped bolero jacket with intricate Victorian lace trim and the romantic full-skirted dress that is as easy on the beach as it is at a seaside dinner

**Tracy Reese** A tiered tunic in icy pastels that can be worn as a blouse or dress

**Wunderkind by Wolfgang Joop** The enormous peasant blouse in White or Ivory batiste, worn with a full petticoat-like skirt

**Yeohlee** A naughty Victorian bathing suit

**Zac Posen** Our silk tie plaid cocktail dress



the **universe** is **expanding**  
*Pantone adds stationery, furniture  
to consumer goods*

**Making its debut this month is PANTONE UNIVERSE Stationery.**

Produced in European sizes in colors like Tomato, Dazzling Blue, Flame Orange, Sunny Lime and Mineral Gray, each item bears the PANTONE UNIVERSE signature. The collection includes a broad range of paper, envelopes, notebooks, memo pads, presentation books, file boxes and more. Available now at The Terence Conran Shop, the MoMA Store, Felissimo, Sam Flax and A.I. Friedman, as well as [www.pantoneuniverse.com](http://www.pantoneuniverse.com), from \$2.25 to \$9.75.

**Also soaring across the ocean is the limited-edition PANTONE Flight Stool.** Designed and crafted by London-based design team Barber Osgerby, each stool is handmade with 10 sheets of birch plywood veneer, lacquered and laminated, then silk-screened with the individual identifying PANTONE Number.

Exclaims Barneys' Simon Doonan, "Who ever thought the PANTONE Chip could become a piece of furniture? The whole thing is very groovy!"

Available in a range of 48 colors, the limited-edition PANTONE Flight Stool is available at [www.pantoneuniverse.com](http://www.pantoneuniverse.com) for \$549.



## experts talk *about spring '06*

**What influence do celebrities' fashion color choices have on consumers? on designers and manufacturers?**

**Michael Fink** Senior Fashion Director, Saks Fifth Avenue  
Who doesn't remember Rene Zellweger's vintage yellow gown, Nicole Kidman's teal Gucci gown and Cate Blanchett in Valentino gold (not red!)? There's nothing that gets noticed more than a woman in color in a room full of black. As celebrities play paper doll muses for designers, it allows us, the "wonderful people in the dark," to evaluate and determine what new colors or silhouettes might be something to experiment with. When a particular color is photographed repeatedly on different celebrities, it can certainly validate an emerging trend. Now, where's my copy of *Star*?

**Cindy Weber-Cleary** Fashion Director, *InStyle*

I think that readers look at celebrities as test subjects to a certain extent. If they see a lot of celebs looking great wearing a certain color, then it might influence them. We recently ran a series of pictures of celebrities wearing shades of green, which can be a tough sell, but our readers might be convinced to try a challenging color like green if the overall impression is positive.

**Simon Doonan** Creative Director, Barneys New York

If a celebrity makes a bold, provocative color choice – flaming orange or brilliant chartreuse – the consumer will remember it. Anything subtle is quickly forgotten.

**Robert Burke** Senior Fashion Director, Bergdorf Goodman  
Color trends are a complicated and ever-changing factor in fashion. No one has a crystal ball, but I will say that there are certain cyclical patterns regarding what colors are popular and what colors are tired. Many things contribute to what those colors may be, and while there is no doubt that celebrities are very influential, they do not influence our direction at Bergdorf Goodman when it comes to color.

**Joan Kaner** Fashion Director, Neiman Marcus  
Celebrities' fashion choices have been able to influence the contemporary customer rather than the designer. As to the influence exerted on designers and manufacturers, my guess is that it is not great. Perhaps in the moderate market it could be influential because their timing is so much slower in covering trends that they are able to react to what celebs are wearing.

## how do **celebrities** influence your collection?

**Alice Roi** I get my inspiration mostly from art sources, but it is always interesting to see how celebrities interpret the clothing into their individual styles.

**Alvin Valley** Celebrities are a way to get the brand beyond our circles; however, I focus on designing for the real women that buy my clothes.

**Badgley Mischka** Modern, real elegance and glamour

**Betsey Johnson** I watch what they wear and love the celeb mags.

**Cynthia Steffe** I'm happy that celebrities love and wear the clothes, and I throw in a few fun, special pieces in the finale that are great red carpet numbers.

**Dana Buchman** I always look at what is happening around me, but I don't really allow any one celebrity to influence me.

**Douglas Hannant** I'm directly influenced by the girls who wear my clothes. They are unique and highly individual.

**Esteban Cortazar** Celebrities influence my collection with their charm and ways to use personal style to inspire and influence our culture.

**Lela Rose** I adore the Old World glamour of the 1940s and 1950s. Actresses like Katharine Hepburn and Babe Paley gave me so much inspiration for this collection.

**Michael Kors** They bring the clothes to life.

**Proenza Schouler** Celebrities aren't really our main focus; we want to dress women regardless of what career they're involved in.

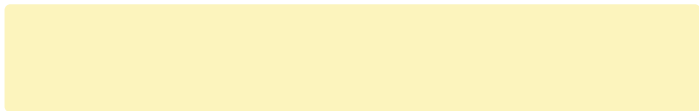
**Reem Acra** Color plays a key role in celebrity dressing. Actresses photographed in eye-catching color tend to receive greater media attention at red carpet events, thus making color an important consideration for designers who dress the Hollywood set.

**Tracy Reese** I'm totally into the style sense of certain celebrities and really appreciate the support they give my work, although my inspirations are usually found in art, film and interiors.

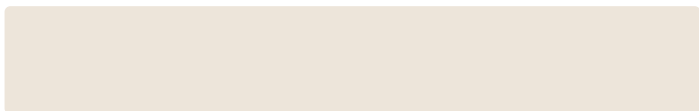
**Wunderkind by Wolfgang Joop** I am always inspired by women who push limits, but I also have my own visions.

**Yigal Azrouel** I hope that I influence and inspire celebrities with my collection. I design for strong women, and I think the celebrities who follow my collections are individualists.

**Zac Posen** Strong, confident and sexy women inspire me to create collections that celebrate personal style and flair. It is this type of woman that always attracts attention one way or another.



**French Vanilla** PANTONE 12-0722 **C** 0 **M** 0 **Y** 30 **K** 2



**Sand Dollar** PANTONE 13-1106 **C** 6 **M** 8 **Y** 12 **K** 0



**Blue Tint** PANTONE 13-4910 **C** 33 **M** 0 **Y** 8 **K** 0



**Cameo Pink** PANTONE 14-2307 **C** 0 **M** 26 **Y** 0 **K** 4



**Lily Green** PANTONE 13-0317 **C** 15 **M** 0 **Y** 34 **K** 4



**Skyway** PANTONE 14-4112 **C** 25 **M** 8 **Y** 0 **K** 4



**Viola** PANTONE 16-3815 **C** 35 **M** 33 **Y** 0 **K** 0



**Melon** PANTONE 16-1442 **C** 0 **M** 45 **Y** 60 **K** 0



**Clove** PANTONE 18-1320 **C** 40 **M** 60 **Y** 70 **K** 20



**Deep Ultramarine** PANTONE 19-3950 **C** 93 **M** 58 **Y** 0 **K** 22

**PANTONE Fashion Color Report** Vol. 24, September 2005. Pantone, Inc., 590 Commerce Blvd., Carlstadt, NJ 07072-3098. Tel: 201.935.5500 Fax: 201.896.0242. PANTONE Colors displayed here may not match PANTONE-identified standards. Consult current PANTONE for fashion and home color system publications for accurate color. PANTONE® and other Pantone, Inc. trademarks are the property of Pantone, Inc. © Pantone, Inc., 2005. All rights reserved.